



**Transplant First**

**Living Donor quality improvement**

**Midlands Kidney Network**

**Thursday 26<sup>th</sup> May 2022 2-4pm**



Please take a 2 minutes to complete a quality improvement skills learning needs assessment  
**[see link in the chat]**

This will help KQuIP tailor the training programme to you and evidence the impact of our training



# Introduction to Quality Improvement

**Catherine Stannard**

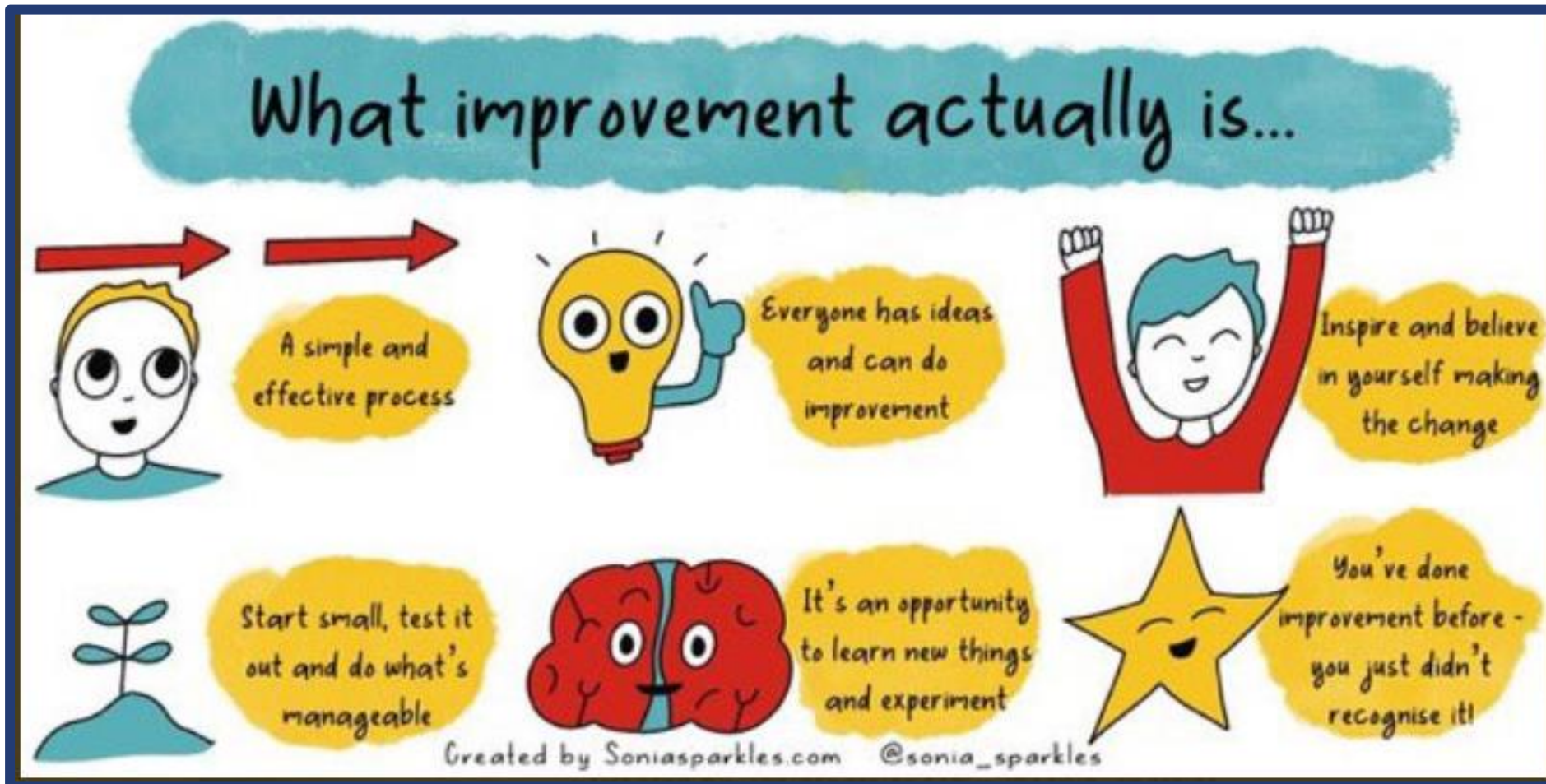
**QI Programme Manager**



# What do we mean by Quality Improvement?



# What do we mean by Quality Improvement?





# What do we mean by Quality Improvement?

- **Not about judgement**
- If we ask you to share progress, this is not for monitoring / reporting / blaming
- All measurement and sharing of progress is for yourselves and to **develop a learning community**





**“Not all changes lead to improvement,  
but all improvement requires change”**



# Institute for Healthcare Improvement (IHI) Model for Improvement



## Model for improvement

What are we trying to accomplish?

How will we know that a change is an improvement?

What change can we make that will result in improvement?



Framework for developing, testing and implementing changes leading to improvement

PDSA cycles - test out changes on a small scale, building learning

- Low risk, less disruptive
- Must measure the impact
- **Did the change lead to improvement?**



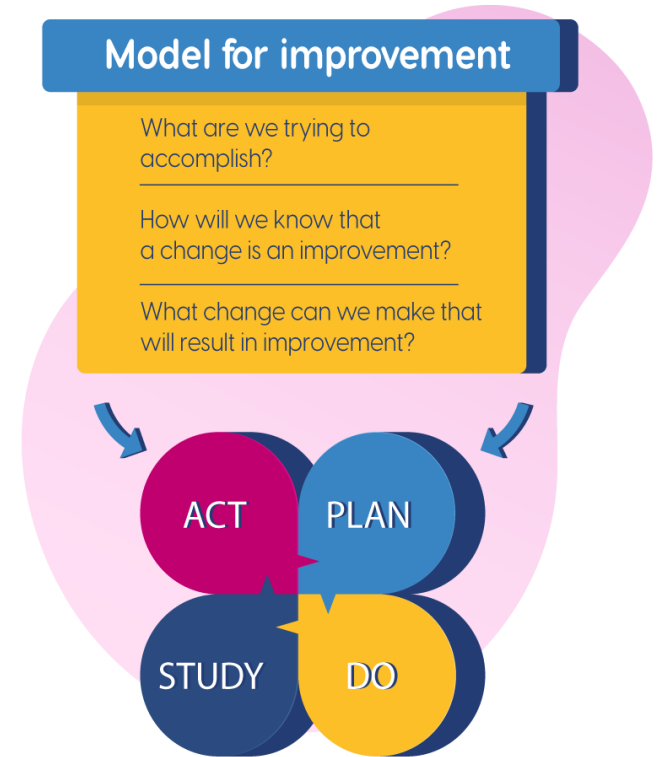


# KQuIP 10 Steps to improvement



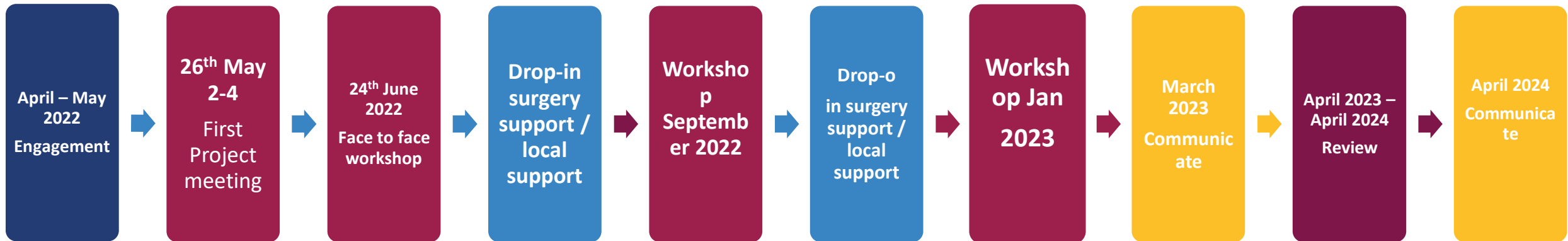
1. Agree an area for improvement
2. Involve and assemble your team
3. Understand your problem/ system
4. Define project aim and scope
5. Choose 'just enough' project measures
6. Develop change ideas
7. Test change ideas (PDSA)
8. Measure impact of changes
9. Do further testing of change ideas
10. Implement successful changes

Share your progress



IHI Model for Improvement

# Midlands Living donor QI project KQuIP framework



# Involving patients in improvement



# Capturing patient experience as baseline – between now and June



- Opportunity to pilot use of patient experience survey – based on the short form Kidney PREM to capture experience of transplant pathway

(Rates elements of experience from 1-7 (1 worst – 7 best it can be))

- Midlands Kidney Network have agreed to support analysis of these patient experience surveys
- Conversations with patients
- Link with Midlands Kidney Network regional patient and carer group

# Next steps



**We suggest between now and June you work on:**

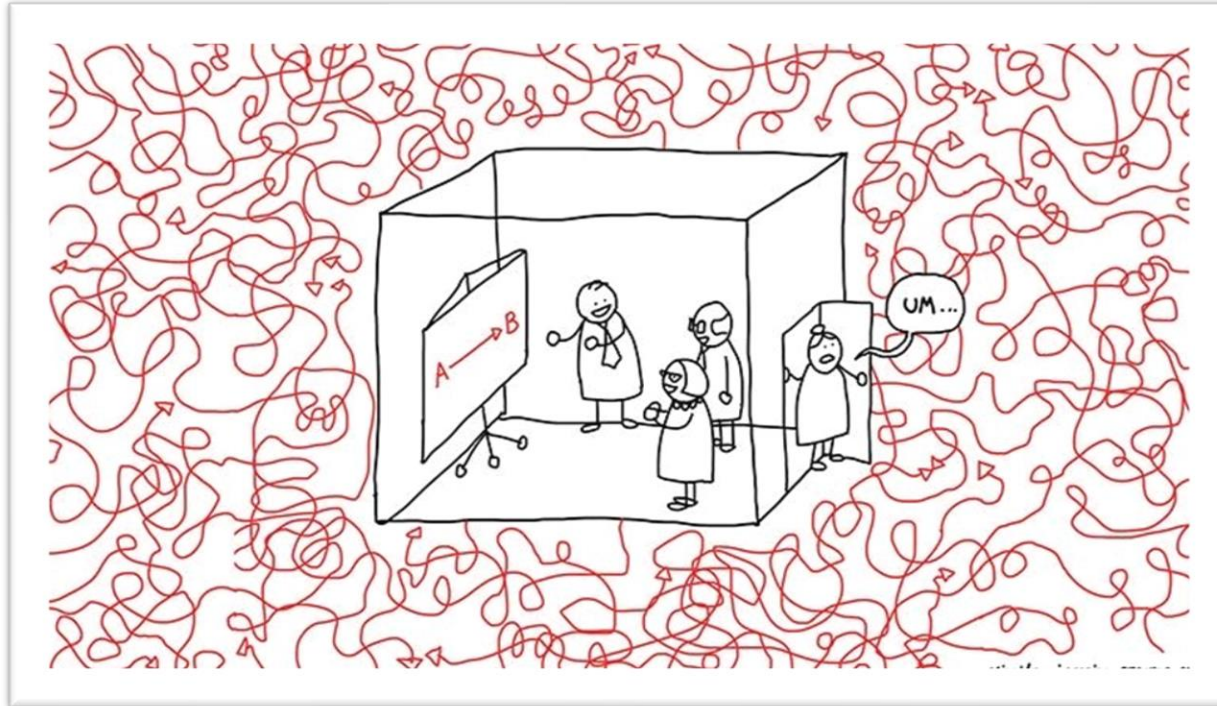
1. Understanding barriers to pre-emptive and living donation using baseline data
2. Utilise the tools available: Transplant first measurement tool, patient experience survey
3. Building your teams – have you got the right people around you to achieve your goals?



# Transplant First Measurement Tool

- Identify a responsible person for data entry
- To gain access to tool: Email:  
[Catherine.stannard@renalregistry.nhs.uk](mailto:Catherine.stannard@renalregistry.nhs.uk)
- If possible input data for 2021, and 2022 onwards prospectively

**It wont always be easy!**



**The KQuIP team and Midlands Kidney Network are here to help you along the way**

**KQuIP**





**Breakout rooms available**