

---

# UK Renal Registry 17th Annual Report: Chapter 3 Demographic and Biochemistry Profile of Kidney Transplant Recipients in the UK in 2013: National and Centre-specific Analyses

Rishi Pruthi<sup>a</sup>, Anna Casula<sup>a</sup>, Iain MacPhee<sup>b</sup>

<sup>a</sup>UK Renal Registry, Bristol, UK; <sup>b</sup>St George's, University of London, UK

---

## Key Words

Blood pressure · Bone metabolism · Chronic kidney disease · Clinical Commissioning Group · Deceased donor · eGFR · Epidemiology · Ethnicity · Graft function · Haemoglobin · Live donor · Outcomes · Renal transplantation · Survival

---

## Summary

- There was a 12% increase in overall renal transplant numbers in 2013, with a significant rise in kidney donation from donors after brainstem death (20%).
- In 2013, death-censored renal transplant failure rates in prevalent patients were similar to previous years at 2.4% per annum. Transplant patient death rates remained stable at 2.4 per 100 patient years.
- The median age of incident and prevalent renal transplant patients in the UK was 50.3 and 52.8 years respectively.
- The median eGFR of prevalent renal transplant recipients was 51.8 ml/min/1.73 m<sup>2</sup>.
- The median eGFR of patients one year after transplantation was 56.9 ml/min/1.73 m<sup>2</sup> post live transplant, 53.0 ml/min/1.73 m<sup>2</sup> post brainstem death transplant and 49.7 ml/min/1.73 m<sup>2</sup> post circulatory death transplant.
- In 2013, 13.4% of prevalent transplant patients had eGFR <30 ml/min/1.73 m<sup>2</sup>.
- The median decline in eGFR slope beyond the first year after transplantation was -0.58 ml/min/1.73 m<sup>2</sup>/year.
- In 2013, infection (26%) and malignancy (24%) remained the commonest causes of death in patients with a functioning renal transplant.

## Introduction

This chapter includes independent analyses regarding renal transplant activity and survival data from the UK Transplant Registry, held by the Organ Donation and Transplantation Directorate (ODT) of NHS Blood and Transplant (NHSBT). The UK Renal Registry (UKRR) has performed additional analyses of renal transplant recipient follow-up data examining demographics, clinical and biochemical variables. NHSBT records all the information regarding the episode of transplantation (donor and recipient details) and the UKRR holds additional information on key clinical and biochemical variables in renal transplant recipients. The co-operation between these two organisations results in a comprehensive database describing the clinical care delivered to renal transplant patients within the UK. This further allows for the comparison of key outcomes between centres and provides insight into the processes involved in the care of such patients in the UK.

This chapter is divided into six sections: (1) transplant activity, waiting list and survival data; (2) transplant demographics; (3) clinical and laboratory outcomes; (4) analysis of prevalent patients by chronic kidney disease (CKD) stage; (5) eGFR slope analysis; and (6) cause of death in transplant recipients. Methodology, results and conclusions of these analyses are discussed in detail for all six sections separately.

The UK Renal Registry methodology is described elsewhere [1]. The UKRR collects quarterly clinical data via an electronic data extraction process from hospital based renal IT systems on all patients receiving renal replacement therapy. Throughout the chapter, the number preceding the centre name in each figure indicates the percentage of missing data for that centre for that variable.

Unless otherwise specified, prevalent transplant patients were defined as patients with a functioning renal transplant on the 31st December 2013.

A list of the recommended audit measures from the Renal Association which are relevant to the transplant population are given in appendix 1 of this chapter. Several of the audit measures are not currently reported by the UKRR in the annual report; the reasons behind this are varied, but predominantly relate to a high proportion of incomplete data or that the relevant variable is not currently within the specified UKRR dataset. Over time it is hoped to work with the renal community to improve reporting across the range of recommended standards.

## Transplant activity, waiting list activity and survival data

### Introduction

NHSBT prospectively collects donor and recipient data around the episode of transplantation. They also request that transplant centres provide an annual paper based data return on the status of the recipient's graft function. This enables ODT to generate comprehensive analyses of renal transplant activity and graft survival statistics.

NHSBT attributes a patient to the centre that performed the transplant operation irrespective of where the patient was cared for before or after the procedure and hence only reports on transplant centre performance.

### Methods

In 2013, there were 23 UK adult renal transplant centres, 19 in England, two in Scotland and one each in Northern Ireland and Wales.

Comprehensive information from 1999 onwards concerning the number of patients on the transplant waiting list, the number of transplants performed, the number of deceased kidney donors (donor after brainstem death and donor after circulatory death), living kidney donors, patient survival and graft survival is available on the NHSBT website (<http://www.organdonation.nhs.uk/ukt/statistics/statistics.asp>).

### Results

During 2013, 3,257 kidney or kidney plus other organ transplants were performed. The absolute number of living kidney donors showed a 6% rise in 2013 representing 33.8% of all transplants performed whilst donor after circulatory death transplants continued to increase and comprised 24.4% of all kidney transplants performed. A 20% rise in the number of transplants from donors after brainstem death was also noted in 2013 (table 3.1).

There were small differences in one and five year risk-adjusted patient and graft survival rates amongst UK renal transplant centres (table 3.2). These graft survival rates include grafts with primary non-function (which are excluded from analysis by some countries).

Using data from the UKRR on prevalent renal transplant patients on 1st January 2013, the death rate during 2013 was 2.4/100 patient years (CI 2.2–2.6) when censored for return to dialysis and 2.5/100 patient years (CI 2.3–2.7) without censoring for dialysis. These death rates are similar to those observed over the last few years and have not shown any impact of the increasing age of the transplanted cohort.

During 2013, 2.4% of prevalent transplant patients experienced graft failure (excluding death as a cause of graft failure) maintaining the fall in graft failure rates

**Table 3.1.** UK kidney and kidney plus other organ transplant numbers in the UK (including paediatric), 1/1/2011–31/12/2013

| Organ                                      | 2011         | 2012         | 2013         | % change 2012–2013 |
|--|--------------|--------------|--------------|--------------------|
| Donor after brainstem death <sup>a</sup>   | 950          | 967          | 1,160        | 20                 |
| Donor after circulatory death <sup>b</sup> | 594          | 708          | 794          | 12                 |
| Living donor kidney                        | 1,026        | 1,034        | 1,100        | 6                  |
| Kidney and liver <sup>c</sup>              | 17           | 17           | 11           | –35                |
| Kidney and heart                           | 0            | 3            | 1            |                    |
| Kidney and pancreas <sup>d</sup>           | 163          | 172          | 190          | 10                 |
| Small bowel (inc kidney)                   | 2            | 0            | 1            |                    |
| <b>Total kidney transplants</b>            | <b>2,752</b> | <b>2,901</b> | <b>3,257</b> | <b>12</b>          |

<sup>a</sup>Includes en bloc kidney transplants (7 in 2011, 4 in 2012, 4 in 2013) and double kidney transplants (5 in 2011, 7 in 2012, 18 in 2013)

<sup>b</sup>Includes en bloc kidney transplants (2 in 2011, 4 in 2012, 6 in 2013) and double kidney transplants (32 in 2011, 52 in 2012, 53 in 2013)

<sup>c</sup>Includes DCD transplants (2 in 2013)

<sup>d</sup>Includes DCD transplants (28 in 2011, 35 in 2012, 36 in 2013)

noted over the last couple of years. Whilst it might be premature to assume that graft failure rates are falling in the UK the 0.5% fall noted in the last five years is certainly encouraging.

### Conclusions

In 2013, the increased number of kidney transplants performed was mostly due to an increase in organs from donors after brainstem death. The graft failure

**Table 3.2.** Risk-adjusted first adult kidney transplant only, graft and patient survival percentage rates for UK centres<sup>a</sup>

| Centre             | Deceased donor<br>1 year survival |           | Deceased donor<br>5 year survival |           | Living kidney donor<br>1 year survival |           | Living kidney donor<br>5 year survival |           |
|--------------------|-----------------------------------|-----------|-----------------------------------|-----------|--|-----------|--|-----------|
|                    | Graft                             | Patient   | Graft                             | Patient   | Graft                                  | Patient   | Graft                                  | Patient   |
| B QEH              | 89                                | 97        | 83                                | 90        | 97                                     | 100       | 89                                     | 95        |
| Belfast            | 95                                | 94        | 89                                | 89        | 97                                     | 100       | 90                                     | 94        |
| Bristol            | 93                                | 95        | 85                                | 86        | 98                                     | 99        | 95                                     | 97        |
| Camb               | 92                                | 97        | 85                                | 92        | 98                                     | 99        | 93                                     | 98        |
| Cardff             | 97                                | 97        | 85                                | 88        | 96                                     | 98        | 86                                     | 96        |
| Covnt              | 87                                | 92        | 89                                | 89        | 94                                     | 99        | 86                                     | 94        |
| Edin               | 91                                | 95        | 83                                | 86        | 96                                     | 98        | 89                                     | 95        |
| Glasgw             | 95                                | 96        | 86                                | 90        | 96                                     | 97        | 93                                     | 97        |
| L Barts            | 90                                | 90        | 89                                | 88        | 96                                     | 98        | 92                                     | 94        |
| L Guys             | 93                                | 96        | 83                                | 88        | 97                                     | 98        | 92                                     | 95        |
| L Rfree            | 94                                | 96        | 90                                | 93        | 98                                     | 99        | 96                                     | 96        |
| L St.G             | 94                                | 98        | 86                                | 94        | 99                                     | 100       | 94                                     | 95        |
| L West             | 95                                | 98        | 88                                | 91        | 96                                     | 99        | 82                                     | 95        |
| Leeds              | 93                                | 96        | 85                                | 90        | 94                                     | 100       | 91                                     | 98        |
| Leic               | 92                                | 96        | 86                                | 79        | 97                                     | 98        | 93                                     | 94        |
| Liv Roy            | 92                                | 94        | 81                                | 91        | 95                                     | 100       | 91                                     | 94        |
| M RI               | 95                                | 96        | 87                                | 89        | 99                                     | 98        | 95                                     | 96        |
| Newc               | 93                                | 95        | 83                                | 87        | 100                                    | 99        | 91                                     | 98        |
| Nottm              | 95                                | 96        | 84                                | 85        | 96                                     | 100       | 91                                     | 95        |
| Oxford             | 93                                | 96        | 89                                | 87        | 97                                     | 97        | 96                                     | 94        |
| Plymth             | 87                                | 96        | 86                                | 90        | 96                                     | 100       | 88                                     | 94        |
| Ports              | 95                                | 95        | 80                                | 87        | 98                                     | 99        | 84                                     | 95        |
| Sheff              | 92                                | 96        | 83                                | 93        | 97                                     | 100       | 92                                     | 98        |
| <b>All centres</b> | <b>93</b>                         | <b>96</b> | <b>85</b>                         | <b>89</b> | <b>97</b>                              | <b>99</b> | <b>91</b>                              | <b>96</b> |

Cohorts for survival rate estimation: 1 year survival: 1/1/2008–31/12/2012; 5 year survival: 1/1/2004–31/12/2008; first grafts only – re-grafts excluded for patient survival estimation. Since the cohorts to estimate 1- and 5-year survival are different, some centres may appear to have 5 year survival better than 1 year survival

<sup>a</sup>Information courtesy of NHSBT: number of transplants, patients and 95% CI for each estimate; statistical methodology for computing risk-adjusted estimates can be obtained from the NHSBT website (see <http://www.organdonation.nhs.uk/ukt/statistics/statistics.asp>)

rate of 2.4% per annum and patient death rate of 2.4 per 100 patient years were similar to those noted in 2012.

## Transplant demographics

### Introduction

Since 2008, all UK renal centres have established electronic linkage to the UKRR or Scottish Renal Registry, giving the UKRR complete coverage of individual patient level data across the UK.

The following sections need to be interpreted in the context of variable repatriation policies; some transplant centres continue to follow up and report on all patients they transplant, whereas others refer patients back to non-transplant centres for most or all ongoing post-transplant care. Some transplant centres only refer back patients when their graft is failing. The time post-transplantation that a patient is referred back to their local centre varies between transplant centres. The UKRR is able to detect duplicate patients (being reported from both transplant and referring centres) and in such situations care is usually attributed to the referring centre (see appendix B2 for allocation procedure). This process may result in some discrepancies in transplant numbers particularly in Oxford/Reading and Clywd/Liverpool Royal.

### Methods

Two centres (Bangor and Colchester) did not have any transplant patients and were excluded from some of the analyses. Their dialysis patients were included in the relevant dialysis population denominators.

For the analysis of primary renal diagnosis (PRD) in transplant recipients, a few centres were excluded from some of the take-on years because of concerns relating to the reliability of PRD coding (with these centres submitting a high percentage of uncertain or missing aetiology codes).

Information on patient demographics (age, gender, ethnicity and PRD) for patients in a given renal centre was obtained from UKRR patient registration data fields. Individual patients were assigned to the centre that returned data for them during 2013. The prevalence of transplant patients in areas covered by individual Clinical Commissioning Groups (CCG) or Health Board/Social

Care Areas (HB) was estimated based on the postcode of the registered address for patients on renal replacement therapy (RRT). Data on ethnic origin, supplied as Patient Administration System (PAS) codes, were retrieved from fields within renal centre IT systems. For the purpose of this analysis, patients were grouped into Whites, South Asians, Blacks, Others and Unknown. The details of ethnicity regrouping into the above categories are provided in appendix H: Coding <http://www.renalreg.org>.

### Results and Conclusions

Prevalent transplant numbers across the UK are described in table 3.3.

The prevalence of renal transplant recipients in each CCG/HB in England, Northern Ireland (Health and Social Care Trust Areas), Scotland (Health Boards) and Wales (Local Health Boards) and the proportion of prevalent patients according to modality in the renal centres across the UK is described in tables 3.4 and 3.5 respectively. After standardisation for age and gender, unexplained variability was evident in the prevalence of renal transplant recipients, with some areas having higher than the predicted number of prevalent transplant patients per million population and others lower. There are a number of potential explanations for these inconsistencies, including geographical differences in access to renal transplantation in the UK. This has previously been analysed in detail by the UKRR [2] and is currently the focus of a large national study (access to Transplant and Transplant Outcome Measures (ATTOM)).

The proportion of prevalent RRT patients with a transplant relative to the number on dialysis has been relatively stable over the last decade.

### Age and gender

The gender ratio amongst incident and prevalent transplant patients has remained stable for at least the last ten years (table 3.6, figure 3.1). Note, absolute patient numbers differ from those published in previous reports as a result of additional data validation and reallocation of patients. The average age of incident transplant patients has steadily increased during the same time period. There has also been a gradual increase in the average age of prevalent transplant patients, which

**Table 3.3.** The prevalence per million population (pmp) of renal transplants in adults in the UK on 31/12/2013, by country

|   | England | N Ireland | Scotland | Wales | UK     |
|---|---------|-----------|----------|-------|--------|
| Number of prevalent transplant patients                   | 24,782  | 815       | 2,478    | 1,517 | 29,592 |
| Total population, mid-2013 estimates from ONS* (millions) | 53.9    | 1.8       | 5.3      | 3.1   | 64.1   |
| Prevalence pmp transplant                                 | 460     | 445       | 465      | 492   | 462    |

\*Office of National Statistics, UK

**Table 3.4.** The prevalence per million population (pmp) of patients with a renal transplant and standardised rate ratio in the UK, as on 31st December 2009–2013, by CCG/HB

<sup>a</sup>CCG/HB – Clinical Commissioning Group (England); Health and Social Care Trust Areas (Northern Ireland); Health Board (Scotland) and Local Health Board (Wales)

<sup>b</sup>Population numbers based on the 2012 mid-year estimates by age group and gender (data obtained from the Office of National Statistics, National Records of Scotland and the Northern Ireland Statistics and Research Agency – based on the 2011 Census)

<sup>c</sup>O/E – age and gender standardised prevalence rate ratio

CCG/HBs with significantly high average rate ratios are bold in greyed areas

CCG/HBs with significantly low average rate ratios are italicised in greyed areas

LCL – lower 95% confidence limit

UCL – upper 95% confidence limit

% non-White – percentage of the CCG/HB population that is non-White, from 2011 Census

| UK Area                                | CCG/HB <sup>a</sup>                       | Total population <sup>b</sup> | Crude rate pmp |            |            |            |            | Age and gender standardised rate ratio 2013 |             |             | % non-White |
|--|---|-------------------------------|----------------|------------|------------|------------|------------|---|-------------|-------------|-------------|
|  |   |                               | 2009           | 2010       | 2011       | 2012       | 2013       | O/E <sup>c</sup>                            | 95% LCL     | 95% UCL     |             |
| Cheshire, Warrington and Wirral        | NHS Eastern Cheshire                      | 195,300                       | 307            | 363        | 394        | 415        | 450        | 0.89  | 0.72        | 1.10        | 3.7         |
|  | NHS South Cheshire                        | 176,800                       | 345            | 396        | 396        | 413        | 452        | 0.93  | 0.75        | 1.15        | 2.9         |
|  | <i>NHS Vale Royal</i>                     | <i>102,100</i>                | <i>274</i>     | <i>274</i> | <i>284</i> | <i>303</i> | <i>352</i> | <i>0.72</i>                                 | <i>0.52</i> | <i>1.00</i> | <i>2.1</i>  |
|  | NHS Warrington                            | 203,700                       | 403            | 368        | 393        | 417        | 476        | 0.99  | 0.82        | 1.21        | 4.1         |
|  | NHS West Cheshire                         | 228,100                       | 355            | 377        | 403        | 430        | 469        | 0.96  | 0.80        | 1.16        | 2.8         |
|  | <i>NHS Wirral</i>                         | <i>320,200</i>                | <i>328</i>     | <i>334</i> | <i>340</i> | <i>340</i> | <i>350</i> | <i>0.73</i>                                 | <i>0.61</i> | <i>0.88</i> | <i>3.0</i>  |
| Durham, Darlington and Tees            | NHS Darlington                            | 105,200                       | 314            | 333        | 390        | 390        | 428        | 0.90  | 0.67        | 1.21        | 3.8         |
|  | NHS Durham Dales, Easington and Sedgfield | 273,000                       | 421            | 429        | 469        | 476        | 520        | 1.05  | 0.89        | 1.24        | 1.2         |
|  | NHS Hartlepool and Stockton-on-Tees       | 284,600                       | 411            | 432        | 425        | 450        | 485        | 1.04  | 0.88        | 1.22        | 4.4         |
|  | NHS North Durham                          | 241,300                       | 369            | 394        | 390        | 410        | 431        | 0.89  | 0.74        | 1.08        | 2.5         |
|  | <b>NHS South Tees</b>                     | <b>273,700</b>                | <b>511</b>     | <b>515</b> | <b>548</b> | <b>559</b> | <b>563</b> | <b>1.21</b>                                 | <b>1.04</b> | <b>1.42</b> | <b>6.7</b>  |
| Greater Manchester                     | <b>NHS Bolton</b>                         | <b>279,000</b>                | <b>423</b>     | <b>452</b> | <b>498</b> | <b>527</b> | <b>548</b> | <b>1.20</b>                                 | <b>1.03</b> | <b>1.41</b> | <b>18.1</b> |
|  | NHS Bury                                  | 186,200                       | 397            | 397        | 414        | 440        | 440        | 0.94  | 0.76        | 1.17        | 10.8        |
|  | NHS Central Manchester                    | 182,400                       | 285            | 329        | 351        | 367        | 422        | 1.19  | 0.95        | 1.49        | 48.0        |
|  | NHS Heywood, Middleton & Rochdale         | 212,000                       | 382            | 396        | 429        | 453        | 486        | 1.07  | 0.89        | 1.30        | 18.3        |
|  | NHS North Manchester                      | 167,100                       | 245            | 293        | 317        | 359        | 389        | 0.98  | 0.77        | 1.25        | 30.8        |
|  | NHS Oldham                                | 225,900                       | 363            | 390        | 407        | 425        | 483        | 1.09  | 0.90        | 1.32        | 22.5        |
|  | NHS Salford                               | 237,100                       | 299            | 337        | 363        | 413        | 418        | 0.95  | 0.78        | 1.16        | 9.9         |
|  | NHS South Manchester                      | 161,300                       | 229            | 273        | 316        | 353        | 378        | 0.93  | 0.72        | 1.20        | 19.6        |
|  | NHS Stockport                             | 283,900                       | 373            | 398        | 409        | 423        | 451        | 0.94  | 0.79        | 1.12        | 7.9         |
|  | NHS Tameside and Glossop                  | 253,400                       | 403            | 430        | 470        | 478        | 497        | 1.05  | 0.88        | 1.25        | 8.2         |
|  | NHS Trafford                              | 228,500                       | 289            | 328        | 359        | 390        | 416        | 0.90  | 0.73        | 1.10        | 14.5        |
|  | NHS Wigan Borough                         | 318,700                       | 342            | 383        | 449        | 483        | 543        | 1.12  | 0.97        | 1.30        | 2.7         |
| Lancashire                             | NHS Blackburn with Darwen                 | 147,700                       | 311            | 311        | 359        | 386        | 433        | 1.00  | 0.78        | 1.28        | 30.8        |
|  | NHS Blackpool                             | 142,000                       | 373            | 359        | 359        | 416        | 479        | 0.99  | 0.78        | 1.26        | 3.3         |
|  | NHS Chorley and South Ribble              | 167,900                       | 298            | 345        | 393        | 393        | 435        | 0.89  | 0.71        | 1.12        | 2.9         |
|  | NHS East Lancashire                       | 371,600                       | 409            | 404        | 436        | 441        | 474        | 1.00  | 0.87        | 1.16        | 11.9        |
|  | NHS Fylde & Wyre                          | 165,000                       | 315            | 315        | 321        | 364        | 400        | 0.79  | 0.62        | 1.01        | 2.1         |
|  | NHS Greater Preston                       | 202,000                       | 317            | 327        | 337        | 376        | 396        | 0.87  | 0.70        | 1.08        | 14.7        |
|  | NHS Lancashire North                      | 158,500                       | 328            | 334        | 347        | 347        | 366        | 0.79  | 0.61        | 1.02        | 4.0         |
|  | NHS West Lancashire                       | 110,900                       | 316            | 370        | 388        | 415        | 406        | 0.83  | 0.62        | 1.12        | 1.9         |
| Merseyside                             | NHS Halton                                | 125,700                       | 342            | 382        | 406        | 446        | 453        | 0.96  | 0.74        | 1.24        | 2.2         |
|  | NHS Knowsley                              | 145,900                       | 370            | 384        | 377        | 397        | 418        | 0.90  | 0.70        | 1.16        | 2.8         |
|  | NHS Liverpool                             | 469,700                       | 326            | 349        | 381        | 398        | 422        | 0.96  | 0.83        | 1.10        | 11.1        |
|  | NHS South Sefton                          | 159,400                       | 332            | 351        | 370        | 414        | 445        | 0.92  | 0.73        | 1.16        | 2.2         |
|  | <i>NHS Southport and Formby</i>           | <i>114,300</i>                | <i>254</i>     | <i>306</i> | <i>315</i> | <i>289</i> | <i>350</i> | <i>0.71</i>                                 | <i>0.52</i> | <i>0.97</i> | <i>3.1</i>  |
|  | NHS St Helens                             | 176,100                       | 307            | 335        | 346        | 352        | 397        | 0.82  | 0.65        | 1.03        | 2.0         |
| Cumbria, Northumberland, Tyne and Wear | NHS Cumbria                               | 505,200                       | 368            | 394        | 402        | 426        | 455        | 0.90  | 0.79        | 1.02        | 1.5         |
|  | NHS Gateshead                             | 200,200                       | 385            | 385        | 415        | 445        | 440        | 0.92  | 0.75        | 1.14        | 3.7         |
|  | NHS Newcastle North and East              | 141,600                       | 431            | 445        | 480        | 445        | 466        | 1.13  | 0.89        | 1.44        | 10.7        |
|  | NHS Newcastle West                        | 140,900                       | 348            | 326        | 341        | 362        | 383        | 0.89  | 0.68        | 1.16        | 18.3        |

Table 3.4. Continued

| UK Area                                 | CCG/HB <sup>a</sup>                            | Total population <sup>b</sup> | Crude rate pmp |            |            |            |             | Age and gender standardised rate ratio 2013 |             |             | % non-White |
|---|--|-------------------------------|----------------|------------|------------|------------|-------------|---|-------------|-------------|-------------|
|   |  |                               | 2009           | 2010       | 2011       | 2012       | 2013        | O/E <sup>c</sup>                            | 95% LCL     | 95% UCL     |             |
| Cumbria, Northumberland, Tyne and Wear  | <b>NHS North Tyneside</b>                      | <b>201,400</b>                | <b>526</b>     | <b>571</b> | <b>586</b> | <b>586</b> | <b>586</b>  | <b>1.21</b>                                 | <b>1.01</b> | <b>1.44</b> | <b>3.4</b>  |
|   | NHS Northumberland                             | 316,100                       | 414            | 389        | 437        | 446        | 481         | 0.94  | 0.81        | 1.11        | 1.6         |
|   | NHS South Tyneside                             | 148,400                       | 472            | 472        | 505        | 512        | 559         | 1.16  | 0.93        | 1.43        | 4.1         |
|   | NHS Sunderland                                 | 275,700                       | 417            | 439        | 482        | 497        | 519         | 1.08  | 0.92        | 1.27        | 4.1         |
| North Yorkshire and Humber              | NHS East Riding of Yorkshire                   | 314,500                       | 385            | 394        | 410        | 426        | 493         | 0.96  | 0.82        | 1.13        | 1.9         |
|   | <i>NHS Hambleton, Richmondshire and Whitby</i> | <i>153,400</i>                | <i>274</i>     | <i>274</i> | <i>300</i> | <i>313</i> | <i>352</i>  | <i>0.70</i>                                 | <i>0.54</i> | <i>0.92</i> | <i>2.7</i>  |
|   | NHS Harrogate and Rural District               | 158,600                       | 435            | 467        | 479        | 530        | 536         | 1.09  | 0.88        | 1.35        | 3.7         |
|   | NHS Hull                                       | 257,200                       | 369            | 385        | 404        | 435        | 478         | 1.08  | 0.91        | 1.29        | 5.9         |
|   | NHS North East Lincolnshire                    | 159,700                       | 363            | 369        | 419        | 445        | 470         | 1.00  | 0.80        | 1.25        | 2.6         |
|   | <i>NHS North Lincolnshire</i>                  | <i>168,400</i>                | <i>267</i>     | <i>267</i> | <i>279</i> | <i>291</i> | <i>315</i>  | <i>0.65</i>                                 | <i>0.49</i> | <i>0.85</i> | <i>4.0</i>  |
|   | NHS Scarborough and Ryedale                    | 110,500                       | 407            | 425        | 453        | 434        | 425         | 0.85  | 0.64        | 1.13        | 2.5         |
| NHS Vale of York                        | 346,100  | 387                           | 407            | 433        | 488        | 526        | 1.11        | 0.96  | 1.28        | 4.0         |             |
| South Yorkshire and Bassetlaw           | NHS Barnsley                                   | 233,700                       | 389            | 407        | 411        | 419        | 441         | 0.91  | 0.75        | 1.10        | 2.1         |
|   | <i>NHS Bassetlaw</i>                           | <i>113,200</i>                | <i>292</i>     | <i>318</i> | <i>318</i> | <i>336</i> | <i>345</i>  | <i>0.69</i>                                 | <i>0.50</i> | <i>0.94</i> | <i>2.6</i>  |
|   | NHS Doncaster                                  | 302,700                       | 334            | 344        | 380        | 406        | 413         | 0.87  | 0.73        | 1.04        | 4.7         |
|   | NHS Rotherham                                  | 258,400                       | 356            | 399        | 434        | 457        | 492         | 1.03  | 0.86        | 1.22        | 6.4         |
| NHS Sheffield                           | 557,400  | 319                           | 355            | 382        | 395        | 418        | 0.96        | 0.85  | 1.10        | 16.3        |             |
| West Yorkshire                          | NHS Airedale, Wharfedale and Craven            | 158,200                       | 417            | 455        | 436        | 449        | 474         | 0.98  | 0.78        | 1.23        | 11.1        |
|   | <b>NHS Bradford City</b>                       | <b>82,300</b>                 | <b>377</b>     | <b>389</b> | <b>401</b> | <b>486</b> | <b>522</b>  | <b>1.56</b>                                 | <b>1.16</b> | <b>2.10</b> | <b>72.2</b> |
|   | <b>NHS Bradford Districts</b>                  | <b>333,500</b>                | <b>429</b>     | <b>462</b> | <b>471</b> | <b>525</b> | <b>570</b>  | <b>1.32</b>                                 | <b>1.15</b> | <b>1.52</b> | <b>28.7</b> |
|   | NHS Calderdale                                 | 205,300                       | 434            | 472        | 507        | 536        | 531         | 1.11  | 0.92        | 1.34        | 10.3        |
|   | NHS Greater Huddersfield                       | 238,800                       | 373            | 398        | 431        | 461        | 473         | 1.01  | 0.84        | 1.22        | 17.4        |
|   | NHS Leeds North                                | 199,600                       | 351            | 366        | 406        | 416        | 421         | 0.90  | 0.73        | 1.12        | 17.4        |
|   | NHS Leeds South and East                       | 238,300                       | 348            | 378        | 394        | 407        | 466         | 1.09  | 0.90        | 1.31        | 18.3        |
|   | NHS Leeds West                                 | 319,800                       | 294            | 328        | 350        | 403        | 441         | 1.05  | 0.89        | 1.24        | 10.8        |
|   | <b>NHS North Kirklees</b>                      | <b>186,700</b>                | <b>477</b>     | <b>487</b> | <b>509</b> | <b>514</b> | <b>595</b>  | <b>1.34</b>                                 | <b>1.11</b> | <b>1.61</b> | <b>25.3</b> |
| <i>NHS Wakefield</i>                    | <i>327,600</i>                                 | <i>314</i>                    | <i>339</i>     | <i>354</i> | <i>375</i> | <i>397</i> | <i>0.82</i> | <i>0.69</i>                                 | <i>0.97</i> | <i>4.6</i>  |             |
| Arden, Herefordshire and Worcestershire | NHS Coventry and Rugby                         | 423,900                       | 361            | 392        | 418        | 439        | 455         | 1.05  | 0.91        | 1.21        | 22.2        |
|   | <i>NHS Herefordshire</i>                       | <i>184,900</i>                | <i>297</i>     | <i>292</i> | <i>303</i> | <i>324</i> | <i>341</i>  | <i>0.68</i>                                 | <i>0.53</i> | <i>0.87</i> | <i>1.8</i>  |
|   | NHS Redditch and Bromsgrove                    | 178,700                       | 353            | 369        | 369        | 408        | 420         | 0.86  | 0.69        | 1.08        | 6.0         |
|   | NHS South Warwickshire                         | 259,200                       | 363            | 405        | 409        | 455        | 471         | 0.96  | 0.81        | 1.15        | 7.0         |
|   | <i>NHS South Worcestershire</i>                | <i>292,300</i>                | <i>291</i>     | <i>325</i> | <i>339</i> | <i>346</i> | <i>373</i>  | <i>0.76</i>                                 | <i>0.63</i> | <i>0.91</i> | <i>3.7</i>  |
|   | NHS Warwickshire North                         | 188,000                       | 378            | 399        | 441        | 436        | 452         | 0.93  | 0.75        | 1.15        | 6.5         |
| NHS Wyre Forest                         | 98,100   | 357                           | 357            | 357        | 377        | 408        | 0.81        | 0.59  | 1.10        | 2.8         |             |
| Birmingham and the Black Country        | NHS Birmingham CrossCity                       | 721,400                       | 352            | 371        | 391        | 413        | 438         | 1.06  | 0.95        | 1.19        | 35.2        |
|   | NHS Birmingham South and Central               | 199,600                       | 361            | 381        | 371        | 366        | 431         | 1.09  | 0.88        | 1.34        | 40.4        |
|   | <i>NHS Dudley</i>                              | <i>313,600</i>                | <i>297</i>     | <i>303</i> | <i>309</i> | <i>290</i> | <i>328</i>  | <i>0.69</i>                                 | <i>0.57</i> | <i>0.84</i> | <i>10.0</i> |
|   | NHS Sandwell and West Birmingham               | 475,700                       | 349            | 357        | 368        | 397        | 454         | 1.10  | 0.96        | 1.26        | 45.3        |
|   | <i>NHS Solihull</i>                            | <i>207,400</i>                | <i>285</i>     | <i>299</i> | <i>313</i> | <i>338</i> | <i>342</i>  | <i>0.72</i>                                 | <i>0.57</i> | <i>0.91</i> | <i>10.9</i> |
|   | NHS Walsall                                    | 270,900                       | 376            | 388        | 413        | 428        | 469         | 1.04  | 0.87        | 1.24        | 21.1        |
| NHS Wolverhampton                       | 251,000  | 299                           | 303            | 299        | 315        | 379        | 0.85        | 0.70  | 1.04        | 32.0        |             |
| Derbyshire and Nottinghamshire          | NHS Erewash                                    | 94,600                        | 264            | 285        | 285        | 296        | 412         | 0.86  | 0.63        | 1.18        | 3.2         |
|   | <i>NHS Hardwick</i>                            | <i>108,900</i>                | <i>257</i>     | <i>266</i> | <i>257</i> | <i>257</i> | <i>257</i>  | <i>0.52</i>                                 | <i>0.36</i> | <i>0.75</i> | <i>1.8</i>  |
|   | NHS Mansfield & Ashfield                       | 192,500                       | 322            | 358        | 400        | 452        | 473         | 0.98  | 0.80        | 1.20        | 2.5         |
|   | NHS Newark & Sherwood                          | 115,900                       | 380            | 431        | 440        | 492        | 535         | 1.08  | 0.84        | 1.39        | 2.4         |
|   | <i>NHS North Derbyshire</i>                    | <i>272,100</i>                | <i>320</i>     | <i>334</i> | <i>364</i> | <i>404</i> | <i>401</i>  | <i>0.79</i>                                 | <i>0.66</i> | <i>0.96</i> | <i>2.5</i>  |
|   | NHS Nottingham City                            | 308,700                       | 233            | 314        | 330        | 353        | 395         | 1.00  | 0.84        | 1.19        | 28.5        |
|   | NHS Nottingham North & East                    | 146,200                       | 301            | 342        | 383        | 410        | 438         | 0.90  | 0.70        | 1.15        | 6.2         |
|   | NHS Nottingham West                            | 110,700                       | 379            | 443        | 461        | 470        | 533         | 1.09  | 0.85        | 1.41        | 7.3         |
|   | NHS Rushcliffe                                 | 111,600                       | 332            | 341        | 385        | 403        | 457         | 0.93  | 0.71        | 1.23        | 6.9         |
| NHS Southern Derbyshire                 | 515,300  | 311                           | 357            | 390        | 411        | 444        | 0.95        | 0.84  | 1.08        | 11.0        |             |

Table 3.4. Continued

| UK Area                              | CCG/HB <sup>a</sup>                              | Total population <sup>b</sup> | Crude rate pmp |            |            |            |             | Age and gender standardised rate ratio 2013 |             |             | % non-White |
|--------------------------------------|--|-------------------------------|----------------|------------|------------|------------|-------------|---|-------------|-------------|-------------|
|                                      |  |                               | 2009           | 2010       | 2011       | 2012       | 2013        | O/E <sup>c</sup>                            | 95% LCL     | 95% UCL     |             |
| East Anglia                          | NHS Cambridgeshire and Peterborough              | 849,000                       | 346            | 375        | 399        | 410        | 435         | 0.94  | 0.85        | 1.04        | 9.5         |
|                                      | NHS Great Yarmouth & Waveney                     | 213,200                       | 305            | 300        | 314        | 338        | 436         | 0.90  | 0.73        | 1.10        | 2.7         |
|                                      | NHS Ipswich and East Suffolk                     | 395,700                       | 306            | 331        | 364        | 369        | 427         | 0.88  | 0.76        | 1.03        | 5.6         |
|                                      | NHS North Norfolk                                | 167,900                       | 369            | 369        | 393        | 375        | 500         | 0.96  | 0.78        | 1.19        | 1.5         |
|                                      | NHS Norwich                                      | 193,400                       | 300            | 300        | 336        | 321        | 409         | 0.92  | 0.74        | 1.14        | 7.3         |
|                                      | NHS South Norfolk                                | 235,200                       | 332            | 361        | 336        | 357        | 455         | 0.92  | 0.77        | 1.12        | 2.6         |
|                                      | NHS West Norfolk                                 | 171,300                       | 327            | 339        | 344        | 391        | 426         | 0.86  | 0.68        | 1.08        | 2.6         |
|                                      | NHS West Suffolk                                 | 221,000                       | 348            | 371        | 380        | 416        | 430         | 0.90  | 0.74        | 1.11        | 4.6         |
| Essex                                | NHS Basildon and Brentwood                       | 250,500                       | 307            | 347        | 363        | 375        | 467         | 1.00  | 0.84        | 1.20        | 7.1         |
|                                      | NHS Castle Point, Rayleigh and Rochford          | 172,100                       | 378            | 372        | 378        | 389        | 436         | 0.87  | 0.69        | 1.09        | 3.0         |
|                                      | NHS Mid Essex                                    | 379,600                       | 369            | 387        | 424        | 414        | 477         | 0.98  | 0.85        | 1.14        | 4.4         |
|                                      | NHS North East Essex                             | 314,300                       | 321            | 340        | 379        | 395        | 433         | 0.91  | 0.77        | 1.08        | 5.5         |
|                                      | NHS Southend                                     | 174,800                       | 286            | 320        | 332        | 366        | 435         | 0.94  | 0.75        | 1.17        | 8.4         |
|                                      | NHS Thurrock                                     | 159,500                       | 295            | 307        | 338        | 357        | 370         | 0.83  | 0.64        | 1.07        | 14.1        |
|                                      | NHS West Essex                                   | 290,000                       | 334            | 372        | 379        | 407        | 417         | 0.88  | 0.74        | 1.06        | 8.2         |
| Hertfordshire and the South Midlands | NHS Bedfordshire                                 | 419,200                       | 375            | 396        | 403        | 465        | 480         | 1.01  | 0.88        | 1.16        | 11.2        |
|                                      | NHS Corby  | 63,100                        | 285            | 317        | 349        | 333        | 317         | 0.70  | 0.45        | 1.08        | 4.5         |
|                                      | NHS East and North Hertfordshire                 | 540,700                       | 324            | 355        | 375        | 409        | 436         | 0.95  | 0.83        | 1.08        | 10.4        |
|                                      | NHS Herts Valleys                                | 569,900                       | 344            | 395        | 419        | 439        | 467         | 1.02  | 0.90        | 1.15        | 14.6        |
|                                      | <b>NHS Luton</b>                                 | <b>205,800</b>                | <b>335</b>     | <b>374</b> | <b>432</b> | <b>471</b> | <b>525</b>  | <b>1.29</b>                                 | <b>1.07</b> | <b>1.55</b> | <b>45.3</b> |
|                                      | NHS Milton Keynes                                | 257,900                       | 341            | 380        | 415        | 450        | 450         | 1.00  | 0.84        | 1.21        | 19.6        |
|                                      | NHS Nene   | 621,800                       | 370            | 397        | 420        | 417        | 439         | 0.93  | 0.83        | 1.05        | 9.1         |
| Leicestershire and Lincolnshire      | NHS East Leicestershire and Rutland              | 319,500                       | 369            | 379        | 401        | 422        | 435         | 0.89  | 0.75        | 1.05        | 9.8         |
|                                      | <b>NHS Leicester City</b>                        | <b>331,600</b>                | <b>516</b>     | <b>516</b> | <b>549</b> | <b>570</b> | <b>630</b>  | <b>1.56</b>                                 | <b>1.36</b> | <b>1.78</b> | <b>49.5</b> |
|                                      | NHS Lincolnshire East                            | 228,100                       | 342            | 364        | 373        | 386        | 425         | 0.83  | 0.68        | 1.01        | 2.0         |
|                                      | NHS Lincolnshire West                            | 227,700                       | 329            | 329        | 347        | 365        | 395         | 0.84  | 0.68        | 1.03        | 3.0         |
|                                      | <i>NHS South Lincolnshire</i>                    | <i>141,000</i>                | <i>213</i>     | <i>255</i> | <i>255</i> | <i>269</i> | <i>269</i>  | <i>0.54</i>                                 | <i>0.39</i> | <i>0.74</i> | <i>2.3</i>  |
|                                      | NHS South West Lincolnshire                      | 122,000                       | 287            | 287        | 344        | 361        | 377         | 0.76  | 0.57        | 1.01        | 2.3         |
|                                      | NHS West Leicestershire                          | 374,200                       | 393            | 430        | 454        | 470        | 497         | 1.03  | 0.90        | 1.19        | 6.9         |
| Shropshire and Staffordshire         | <i>NHS Cannock Chase</i>                         | <i>132,800</i>                | <i>339</i>     | <i>331</i> | <i>316</i> | <i>316</i> | <i>354</i>  | <i>0.73</i>                                 | <i>0.55</i> | <i>0.97</i> | <i>2.4</i>  |
|                                      | <i>NHS East Staffordshire</i>                    | <i>123,900</i>                | <i>218</i>     | <i>242</i> | <i>266</i> | <i>258</i> | <i>339</i>  | <i>0.71</i>                                 | <i>0.52</i> | <i>0.96</i> | <i>9.0</i>  |
|                                      | NHS North Staffordshire                          | 213,200                       | 347            | 356        | 385        | 413        | 446         | 0.90  | 0.74        | 1.10        | 3.5         |
|                                      | <i>NHS Shropshire</i>                            | <i>308,200</i>                | <i>337</i>     | <i>344</i> | <i>357</i> | <i>344</i> | <i>363</i>  | <i>0.73</i>                                 | <i>0.60</i> | <i>0.88</i> | <i>2.0</i>  |
|                                      | NHS South East Staffs and Seisdon and Peninsular | 222,800                       | 355            | 395        | 390        | 381        | 426         | 0.86  | 0.70        | 1.05        | 3.6         |
|                                      | NHS Stafford and Surrounds                       | 151,100                       | 324            | 324        | 351        | 377        | 423         | 0.85  | 0.66        | 1.08        | 4.7         |
|                                      | NHS Stoke on Trent                               | 258,100                       | 384            | 411        | 407        | 434        | 434         | 0.95  | 0.79        | 1.14        | 11.0        |
|                                      | <i>NHS Telford &amp; Wrekin</i>                  | <i>167,700</i>                | <i>274</i>     | <i>280</i> | <i>292</i> | <i>286</i> | <i>352</i>  | <i>0.76</i>                                 | <i>0.59</i> | <i>0.98</i> | <i>7.3</i>  |
| London                               | NHS Barking & Dagenham                           | 190,600                       | 320            | 346        | 404        | 409        | 462         | 1.20  | 0.97        | 1.47        | 41.7        |
|                                      | <b>NHS Barnet</b>                                | <b>364,000</b>                | <b>462</b>     | <b>497</b> | <b>555</b> | <b>618</b> | <b>643</b>  | <b>1.50</b>                                 | <b>1.32</b> | <b>1.71</b> | <b>35.9</b> |
|                                      | NHS Camden                                       | 225,000                       | 396            | 413        | 453        | 476        | 502         | 1.19  | 0.99        | 1.43        | 33.7        |
|                                      | NHS City and Hackney                             | 259,700                       | 316            | 339        | 339        | 362        | 408         | 1.03  | 0.85        | 1.25        | 44.6        |
|                                      | <b>NHS Enfield</b>                               | <b>317,300</b>                | <b>435</b>     | <b>463</b> | <b>526</b> | <b>580</b> | <b>611</b>  | <b>1.45</b>                                 | <b>1.26</b> | <b>1.66</b> | <b>39.0</b> |
|                                      | <b>NHS Haringey</b>                              | <b>258,900</b>                | <b>398</b>     | <b>436</b> | <b>483</b> | <b>529</b> | <b>560</b>  | <b>1.34</b>                                 | <b>1.14</b> | <b>1.57</b> | <b>39.5</b> |
|                                      | NHS Havering                                     | 239,700                       | 300            | 313        | 325        | 334        | 388         | 0.84  | 0.69        | 1.03        | 12.3        |
|                                      | <b>NHS Islington</b>                             | <b>211,000</b>                | <b>455</b>     | <b>469</b> | <b>507</b> | <b>554</b> | <b>602</b>  | <b>1.44</b>                                 | <b>1.21</b> | <b>1.72</b> | <b>31.8</b> |
|                                      | NHS Newham                                       | 314,100                       | 274            | 309        | 325        | 366        | 423         | 1.12  | 0.95        | 1.33        | 71.0        |
|                                      | <b>NHS Redbridge</b>                             | <b>284,600</b>                | <b>362</b>     | <b>429</b> | <b>453</b> | <b>513</b> | <b>548</b>  | <b>1.31</b>                                 | <b>1.12</b> | <b>1.53</b> | <b>57.5</b> |
|                                      | NHS Tower Hamlets                                | 263,000                       | 240            | 293        | 297        | 342        | 369         | 1.01  | 0.83        | 1.23        | 54.8        |
|                                      | NHS Waltham Forest                               | 262,600                       | 377            | 415        | 438        | 449        | 487         | 1.18  | 0.99        | 1.40        | 47.8        |
| <b>NHS Brent</b>                     | <b>314,700</b>                                   | <b>566</b>                    | <b>597</b>     | <b>610</b> | <b>658</b> | <b>734</b> | <b>1.73</b> | <b>1.52</b>                                 | <b>1.97</b> | <b>63.7</b> |             |

Table 3.4. Continued

| UK Area   | CCG/HB <sup>a</sup>   | Total population <sup>b</sup> | Crude rate pmp |            |            |            |            | Age and gender standardised rate ratio 2013 |             |             | % non-White |
|---|---|-------------------------------|----------------|------------|------------|------------|------------|---|-------------|-------------|-------------|
|   |   |                               | 2009           | 2010       | 2011       | 2012       | 2013       | O/E <sup>c</sup>                            | 95% LCL     | 95% UCL     |             |
| London  | NHS Central London (Westminster)                                      | 161,000                       | 391            | 435        | 428        | 466        | 503        | 1.11  | 0.89        | 1.38        | 36.2        |
|   | <b>NHS Ealing</b>   | <b>340,700</b>                | <b>543</b>     | <b>578</b> | <b>596</b> | <b>628</b> | <b>643</b> | <b>1.50</b>                                 | <b>1.31</b> | <b>1.71</b> | <b>51.0</b> |
|   | NHS Hammersmith and Fulham  | 179,900                       | 400            | 434        | 428        | 450        | 484        | 1.14  | 0.93        | 1.41        | 31.9        |
|   | <b>NHS Harrow</b>   | <b>242,400</b>                | <b>656</b>     | <b>710</b> | <b>710</b> | <b>734</b> | <b>747</b> | <b>1.69</b>                                 | <b>1.46</b> | <b>1.95</b> | <b>57.8</b> |
|   | <b>NHS Hillingdon</b>   | <b>281,800</b>                | <b>472</b>     | <b>518</b> | <b>568</b> | <b>596</b> | <b>600</b> | <b>1.40</b>                                 | <b>1.21</b> | <b>1.63</b> | <b>39.4</b> |
|   | <b>NHS Hounslow</b>   | <b>259,100</b>                | <b>471</b>     | <b>510</b> | <b>525</b> | <b>548</b> | <b>618</b> | <b>1.45</b>                                 | <b>1.24</b> | <b>1.69</b> | <b>48.6</b> |
|   | NHS West London (Kensington and Chelsea, Queen's Park and Paddington) | 218,800                       | 421            | 494        | 494        | 498        | 507        | 1.11  | 0.93        | 1.34        | 33.4        |
|   | <b>NHS Bexley</b>   | <b>234,300</b>                | <b>465</b>     | <b>516</b> | <b>529</b> | <b>538</b> | <b>581</b> | <b>1.29</b>                                 | <b>1.09</b> | <b>1.53</b> | <b>18.1</b> |
|   | <b>NHS Bromley</b>  | <b>314,000</b>                | <b>452</b>     | <b>494</b> | <b>494</b> | <b>516</b> | <b>541</b> | <b>1.17</b>                                 | <b>1.00</b> | <b>1.36</b> | <b>15.7</b> |
|   | NHS Croydon   | 368,900                       | 317            | 331        | 358        | 377        | 412        | 0.95  | 0.81        | 1.11        | 44.9        |
|   | NHS Greenwich   | 260,100                       | 342            | 369        | 404        | 446        | 481        | 1.16  | 0.97        | 1.38        | 37.5        |
|   | NHS Kingston  | 163,900                       | 390            | 397        | 409        | 451        | 470        | 1.07  | 0.86        | 1.34        | 25.5        |
|   | NHS Lambeth   | 310,200                       | 326            | 335        | 374        | 416        | 464        | 1.13  | 0.96        | 1.33        | 42.9        |
|   | <b>NHS Lewisham</b>   | <b>281,600</b>                | <b>391</b>     | <b>380</b> | <b>391</b> | <b>408</b> | <b>497</b> | <b>1.19</b>                                 | <b>1.00</b> | <b>1.40</b> | <b>46.5</b> |
|   | <b>NHS Merton</b>   | <b>202,200</b>                | <b>405</b>     | <b>415</b> | <b>455</b> | <b>499</b> | <b>559</b> | <b>1.28</b>                                 | <b>1.07</b> | <b>1.54</b> | <b>35.1</b> |
|   | NHS Richmond  | 189,100                       | 291            | 307        | 333        | 360        | 391        | 0.84  | 0.67        | 1.06        | 14.0        |
|   | <b>NHS Southwark</b>  | <b>293,500</b>                | <b>453</b>     | <b>480</b> | <b>511</b> | <b>555</b> | <b>596</b> | <b>1.44</b>                                 | <b>1.24</b> | <b>1.67</b> | <b>45.8</b> |
| NHS Sutton  | 193,600   | 418                           | 444            | 454        | 491        | 511        | 1.12       | 0.92  | 1.37        | 21.4        |             |
| NHS Wandsworth  | 308,300   | 318                           | 334            | 373        | 405        | 441        | 1.07       | 0.90  | 1.26        | 28.6        |             |
| Bath, Gloucestershire, Swindon and Wiltshire                | NHS Bath and North East Somerset                                      | 177,600                       | 304            | 293        | 287        | 293        | 360        | 0.79  | 0.62        | 1.01        | 5.4         |
|   | <i>NHS Gloucestershire</i>  | <i>602,200</i>                | <i>345</i>     | <i>354</i> | <i>384</i> | <i>380</i> | <i>425</i> | <i>0.88</i>                                 | <i>0.78</i> | <i>0.99</i> | <i>4.6</i>  |
|   | NHS Swindon   | 217,200                       | 350            | 414        | 437        | 447        | 488        | 1.05  | 0.87        | 1.27        | 10.0        |
|   | <i>NHS Wiltshire</i>  | <i>476,800</i>                | <i>323</i>     | <i>354</i> | <i>382</i> | <i>394</i> | <i>398</i> | <i>0.83</i>                                 | <i>0.72</i> | <i>0.95</i> | <i>3.4</i>  |
| Bristol, North Somerset, Somerset and South Gloucestershire | <b>NHS Bristol</b>  | <b>432,500</b>                | <b>451</b>     | <b>476</b> | <b>486</b> | <b>511</b> | <b>550</b> | <b>1.31</b>                                 | <b>1.15</b> | <b>1.49</b> | <b>16.0</b> |
|   | NHS North Somerset  | 204,400                       | 396            | 421        | 431        | 465        | 484        | 0.98  | 0.81        | 1.20        | 2.7         |
|   | NHS Somerset  | 535,000                       | 363            | 383        | 413        | 415        | 436        | 0.89  | 0.78        | 1.01        | 2.0         |
|   | NHS South Gloucestershire   | 266,100                       | 436            | 455        | 466        | 481        | 507        | 1.07  | 0.90        | 1.27        | 5.0         |
| Devon, Cornwall and Isles of Scilly                         | NHS Kernow  | 540,200                       | 441            | 452        | 476        | 515        | 546        | 1.09  | 0.97        | 1.22        | 1.8         |
|   | NHS North, East, West Devon   | 869,400                       | 428            | 435        | 444        | 468        | 504        | 1.05  | 0.96        | 1.15        | 3.0         |
|   | NHS South Devon and Torbay  | 273,300                       | 428            | 461        | 483        | 487        | 545        | 1.08  | 0.92        | 1.27        | 2.1         |
| Kent and Medway   | NHS Ashford   | 120,100                       | 425            | 441        | 466        | 516        | 516        | 1.11  | 0.86        | 1.42        | 6.3         |
|   | NHS Canterbury and Coastal  | 200,300                       | 374            | 399        | 419        | 479        | 494        | 1.09  | 0.89        | 1.32        | 5.9         |
|   | NHS Dartford, Gravesham and Swanley                                   | 249,200                       | 465            | 474        | 457        | 478        | 510        | 1.11  | 0.93        | 1.32        | 13.0        |
|   | NHS Medway  | 268,200                       | 380            | 406        | 414        | 447        | 492        | 1.08  | 0.91        | 1.29        | 10.4        |
|   | NHS South Kent Coast  | 203,000                       | 310            | 345        | 374        | 394        | 419        | 0.86  | 0.69        | 1.06        | 4.5         |
|   | <b>NHS Swale</b>  | <b>108,200</b>                | <b>416</b>     | <b>425</b> | <b>517</b> | <b>545</b> | <b>601</b> | <b>1.28</b>                                 | <b>1.00</b> | <b>1.63</b> | <b>3.8</b>  |
|   | <b>NHS Thanet</b>   | <b>135,700</b>                | <b>361</b>     | <b>405</b> | <b>450</b> | <b>538</b> | <b>597</b> | <b>1.27</b>                                 | <b>1.02</b> | <b>1.58</b> | <b>4.5</b>  |
|   | NHS West Kent   | 463,700                       | 354            | 358        | 377        | 403        | 421        | 0.89  | 0.77        | 1.02        | 4.9         |
| Surrey and Sussex   | NHS Brighton & Hove   | 275,800                       | 305            | 348        | 363        | 370        | 388        | 0.88  | 0.73        | 1.06        | 10.9        |
|   | NHS Coastal West Sussex   | 476,700                       | 386            | 399        | 424        | 424        | 462        | 0.94  | 0.83        | 1.08        | 3.8         |
|   | NHS Crawley   | 108,300                       | 286            | 286        | 314        | 332        | 342        | 0.78  | 0.57        | 1.08        | 20.1        |
|   | NHS East Surrey   | 175,900                       | 313            | 313        | 318        | 335        | 370        | 0.78  | 0.62        | 1.00        | 8.3         |
|   | <i>NHS Eastbourne, Hailsham and Seaford</i>                           | <i>182,000</i>                | <i>302</i>     | <i>319</i> | <i>330</i> | <i>346</i> | <i>368</i> | <i>0.77</i>                                 | <i>0.60</i> | <i>0.98</i> | <i>4.4</i>  |
|   | <i>NHS Guildford and Waverley</i>                                     | <i>205,900</i>                | <i>306</i>     | <i>301</i> | <i>291</i> | <i>345</i> | <i>354</i> | <i>0.77</i>                                 | <i>0.61</i> | <i>0.97</i> | <i>7.2</i>  |
|   | <i>NHS Hastings &amp; Rother</i>                                      | <i>181,400</i>                | <i>303</i>     | <i>325</i> | <i>353</i> | <i>342</i> | <i>364</i> | <i>0.74</i>                                 | <i>0.58</i> | <i>0.94</i> | <i>4.6</i>  |
|   | NHS High Weald Lewes Havens   | 167,800                       | 328            | 334        | 352        | 411        | 417        | 0.83  | 0.66        | 1.05        | 3.1         |
|   | <i>NHS Horsham and Mid Sussex</i>                                     | <i>223,300</i>                | <i>313</i>     | <i>331</i> | <i>336</i> | <i>336</i> | <i>367</i> | <i>0.76</i>                                 | <i>0.61</i> | <i>0.95</i> | <i>4.9</i>  |
|   | NHS North West Surrey   | 338,200                       | 411            | 417        | 423        | 444        | 467        | 0.99  | 0.85        | 1.16        | 12.5        |
|   | NHS Surrey Downs  | 282,700                       | 368            | 389        | 393        | 407        | 432        | 0.89  | 0.75        | 1.07        | 9.1         |
|   | NHS Surrey Heath  | 94,100                        | 446            | 468        | 489        | 521        | 499        | 1.03  | 0.78        | 1.38        | 9.3         |



Table 3.4. Continued

| UK Area          | CCG/HB <sup>a</sup>                      | Total population <sup>b</sup> | Crude rate pmp |            |            |            |            | Age and gender standardised rate ratio 2013 |             |             | % non-White |
|------------------|--|-------------------------------|----------------|------------|------------|------------|------------|---|-------------|-------------|-------------|
|                  |  |                               | 2009           | 2010       | 2011       | 2012       | 2013       | O/E <sup>c</sup>                            | 95% LCL     | 95% UCL     |             |
| Thames Valley    | NHS Aylesbury Vale                       | 196,400                       | 484            | 494        | 525        | 545        | 555        | 1.16  | 0.96        | 1.40        | 9.7         |
|                  | NHS Bracknell and Ascot                  | 132,900                       | 376            | 414        | 451        | 481        | 504        | 1.09  | 0.86        | 1.38        | 9.5         |
|                  | NHS Chiltern                             | 317,900                       | 396            | 425        | 425        | 469        | 497        | 1.05  | 0.90        | 1.23        | 15.8        |
|                  | <b>NHS Newbury and District</b>          | <b>105,100</b>                | <b>561</b>     | <b>542</b> | <b>618</b> | <b>618</b> | <b>628</b> | <b>1.32</b>                                 | <b>1.03</b> | <b>1.67</b> | <b>4.4</b>  |
|                  | NHS North & West Reading                 | 99,300                        | 332            | 403        | 403        | 433        | 493        | 1.04  | 0.78        | 1.37        | 10.4        |
|                  | NHS Oxfordshire                          | 647,100                       | 400            | 423        | 436        | 473        | 487        | 1.06  | 0.95        | 1.19        | 9.3         |
|                  | <b>NHS Slough</b>                        | <b>141,800</b>                | <b>585</b>     | <b>642</b> | <b>649</b> | <b>684</b> | <b>818</b> | <b>2.02</b>                                 | <b>1.69</b> | <b>2.43</b> | <b>54.3</b> |
|                  | <b>NHS South Reading</b>                 | <b>107,200</b>                | <b>560</b>     | <b>560</b> | <b>579</b> | <b>569</b> | <b>607</b> | <b>1.52</b>                                 | <b>1.19</b> | <b>1.94</b> | <b>30.5</b> |
|                  | NHS Windsor, Ascot and Maidenhead        | 139,000                       | 338            | 410        | 439        | 511        | 561        | 1.22  | 0.98        | 1.53        | 14.7        |
| NHS Wokingham    | 156,700                                  | 389                           | 389            | 402        | 434        | 440        | 0.92       | 0.73  | 1.17        | 11.6        |             |
| Wessex           | <i>NHS Dorset</i>                        | <i>750,300</i>                | <i>396</i>     | <i>407</i> | <i>415</i> | <i>409</i> | <i>425</i> | <i>0.87</i>                                 | <i>0.78</i> | <i>0.98</i> | <i>4.0</i>  |
|                  | NHS Fareham and Gosport                  | 196,100                       | 403            | 403        | 418        | 423        | 479        | 0.99  | 0.81        | 1.21        | 3.4         |
|                  | <i>NHS Isle of Wight</i>                 | <i>138,700</i>                | <i>346</i>     | <i>360</i> | <i>368</i> | <i>382</i> | <i>375</i> | <i>0.74</i>                                 | <i>0.57</i> | <i>0.97</i> | <i>2.7</i>  |
|                  | NHS North East Hampshire and Farnham     | 206,800                       | 329            | 368        | 368        | 387        | 416        | 0.89  | 0.72        | 1.11        | 9.7         |
|                  | <i>NHS North Hampshire</i>               | <i>216,200</i>                | <i>314</i>     | <i>328</i> | <i>356</i> | <i>370</i> | <i>379</i> | <i>0.79</i>                                 | <i>0.64</i> | <i>0.99</i> | <i>6.4</i>  |
|                  | NHS Portsmouth                           | 206,800                       | 348            | 396        | 392        | 406        | 435        | 1.03  | 0.84        | 1.26        | 11.6        |
|                  | NHS South Eastern Hampshire              | 209,100                       | 387            | 416        | 411        | 445        | 459        | 0.94  | 0.77        | 1.15        | 3.1         |
|                  | NHS Southampton                          | 239,400                       | 338            | 338        | 384        | 418        | 464        | 1.12  | 0.93        | 1.35        | 14.1        |
|                  | NHS West Hampshire                       | 544,400                       | 373            | 393        | 406        | 417        | 435        | 0.89  | 0.78        | 1.01        | 3.9         |
| Wales            | <i>Betsi Cadwaladr University</i>        | <i>690,400</i>                | <i>343</i>     | <i>359</i> | <i>359</i> | <i>352</i> | <i>336</i> | <i>0.69</i>                                 | <i>0.61</i> | <i>0.79</i> | <i>2.5</i>  |
|                  | <i>Powys Teaching</i>                    | <i>133,000</i>                | <i>361</i>     | <i>399</i> | <i>391</i> | <i>354</i> | <i>369</i> | <i>0.72</i>                                 | <i>0.55</i> | <i>0.95</i> | <i>1.6</i>  |
|                  | Hywel Dda                                | 383,400                       | 412            | 409        | 438        | 436        | 503        | 1.03  | 0.90        | 1.19        | 2.2         |
|                  | <b>Abertawe Bro Morgannwg University</b> | <b>519,500</b>                | <b>449</b>     | <b>485</b> | <b>541</b> | <b>576</b> | <b>603</b> | <b>1.27</b>                                 | <b>1.14</b> | <b>1.42</b> | <b>3.9</b>  |
|                  | <b>Cwm Taf</b>                           | <b>294,500</b>                | <b>567</b>     | <b>628</b> | <b>662</b> | <b>686</b> | <b>740</b> | <b>1.58</b>                                 | <b>1.38</b> | <b>1.80</b> | <b>2.6</b>  |
|                  | <b>Aneurin Bevan</b>                     | <b>578,000</b>                | <b>469</b>     | <b>500</b> | <b>523</b> | <b>587</b> | <b>599</b> | <b>1.26</b>                                 | <b>1.14</b> | <b>1.40</b> | <b>3.9</b>  |
|                  | <b>Cardiff and Vale University</b>       | <b>475,300</b>                | <b>406</b>     | <b>440</b> | <b>467</b> | <b>501</b> | <b>515</b> | <b>1.18</b>                                 | <b>1.04</b> | <b>1.34</b> | <b>12.2</b> |
| Scotland         | <i>Ayrshire and Arran</i>                | <i>373,200</i>                | <i>386</i>     | <i>383</i> | <i>375</i> | <i>402</i> | <i>426</i> | <i>0.86</i>                                 | <i>0.73</i> | <i>1.00</i> | <i>1.2</i>  |
|                  | Borders                                  | 113,700                       | 361            | 413        | 413        | 466        | 484        | 0.93  | 0.72        | 1.22        | 1.3         |
|                  | <i>Dumfries and Galloway</i>             | <i>150,800</i>                | <i>351</i>     | <i>345</i> | <i>371</i> | <i>365</i> | <i>378</i> | <i>0.74</i>                                 | <i>0.57</i> | <i>0.95</i> | <i>1.2</i>  |
|                  | <i>Fife</i>                              | <i>366,200</i>                | <i>306</i>     | <i>319</i> | <i>344</i> | <i>355</i> | <i>388</i> | <i>0.80</i>                                 | <i>0.68</i> | <i>0.94</i> | <i>2.4</i>  |
|                  | <i>Forth Valley</i>                      | <i>299,100</i>                | <i>294</i>     | <i>311</i> | <i>334</i> | <i>364</i> | <i>395</i> | <i>0.81</i>                                 | <i>0.68</i> | <i>0.97</i> | <i>2.2</i>  |
|                  | Grampian                                 | 573,400                       | 351            | 359        | 373        | 398        | 427        | 0.89  | 0.78        | 1.01        | 4.0         |
|                  | <b>Greater Glasgow and Clyde</b>         | <b>1,217,000</b>              | <b>412</b>     | <b>423</b> | <b>440</b> | <b>487</b> | <b>522</b> | <b>1.11</b>                                 | <b>1.03</b> | <b>1.20</b> | <b>7.3</b>  |
|                  | Highland                                 | 319,800                       | 450            | 472        | 463        | 466        | 485        | 0.95  | 0.81        | 1.11        | 1.3         |
|                  | Lanarkshire                              | 572,500                       | 384            | 402        | 423        | 459        | 479        | 0.99  | 0.88        | 1.11        | 2.0         |
|                  | <i>Lothian</i>                           | <i>843,700</i>                | <i>316</i>     | <i>333</i> | <i>351</i> | <i>361</i> | <i>370</i> | <i>0.80</i>                                 | <i>0.71</i> | <i>0.89</i> | <i>5.6</i>  |
|                  | Orkney                                   | 21,500                        | 418            | 372        | 372        | 372        | 372        | 0.72  | 0.36        | 1.44        | 0.7         |
|                  | Shetland                                 | 23,200                        | 259            | 259        | 215        | 259        | 259        | 0.52  | 0.24        | 1.16        | 1.5         |
|                  | Tayside                                  | 411,700                       | 398            | 401        | 415        | 425        | 447        | 0.93  | 0.80        | 1.07        | 3.2         |
| Western Isles    | 27,600                                   | 254                           | 254            | 290        | 290        | 327        | 0.63       | 0.33  | 1.21        | 0.9         |             |
| Northern Ireland | Belfast                                  | 348,300                       | 359            | 393        | 405        | 434        | 465        | 1.07  | 0.92        | 1.25        | 3.2         |
|                  | Northern                                 | 465,500                       | 335            | 352        | 367        | 378        | 410        | 0.90  | 0.78        | 1.04        | 1.2         |
|                  | Southern                                 | 363,100                       | 286            | 303        | 341        | 386        | 416        | 0.96  | 0.81        | 1.12        | 1.2         |
|                  | South Eastern                            | 350,100                       | 363            | 360        | 388        | 394        | 426        | 0.92  | 0.78        | 1.08        | 1.3         |
|                  | Western                                  | 296,600                       | 324            | 344        | 351        | 354        | 438        | 0.99  | 0.83        | 1.17        | 1.0         |

could reflect the increasing age at which patients are transplanted and/or improved survival after renal transplantation over the last few years. The prevalent transplant patient workload across the UK increased to

29,592 patients at the end of 2013. The continued expansion of this patient group means there is a need for careful planning by renal centres for future service provision and resource allocation.

**Table 3.5.** Distribution of prevalent patients on RRT by centre and modality on 31/12/2013

| Centre                    | N     | % HD | % PD | % Transplant |
|---------------------------|-------|------|------|--------------|
| <b>Transplant centres</b> |       |      |      |              |
| B QEH                     | 2,051 | 45   | 7    | 48           |
| Belfast                   | 729   | 29   | 4    | 67           |
| Bristol                   | 1,427 | 36   | 5    | 59           |
| Camb                      | 1,198 | 32   | 2    | 66           |
| Cardff                    | 1,584 | 31   | 5    | 65           |
| Covnt                     | 940   | 41   | 9    | 50           |
| Edinb                     | 739   | 37   | 4    | 59           |
| Glasgw                    | 1,598 | 37   | 3    | 60           |
| L Barts                   | 2,103 | 45   | 9    | 45           |
| L Guys                    | 1,841 | 34   | 2    | 64           |
| L Rfree                   | 1,955 | 37   | 7    | 56           |
| L St.G                    | 759   | 37   | 6    | 57           |
| L West                    | 3,142 | 44   | 2    | 54           |
| Leeds                     | 1,466 | 35   | 5    | 61           |
| Leic                      | 2,072 | 44   | 7    | 49           |
| Liv Roy                   | 1,269 | 28   | 5    | 67           |
| M RI                      | 1,864 | 28   | 4    | 68           |
| Newc                      | 964   | 28   | 4    | 67           |
| Nottm                     | 1,075 | 35   | 8    | 58           |
| Oxford                    | 1,565 | 28   | 6    | 66           |
| Plymth                    | 503   | 27   | 7    | 66           |
| Ports                     | 1,555 | 39   | 5    | 56           |
| Sheff                     | 1,329 | 44   | 5    | 50           |
| <b>Dialysis centres</b>   |       |      |      |              |
| Abrdn                     | 519   | 43   | 5    | 52           |
| Airdrie                   | 393   | 49   | 4    | 48           |
| Antrim                    | 224   | 57   | 7    | 37           |
| B Heart                   | 658   | 66   | 6    | 28           |
| Bangor                    | 99    | 87   | 13   |              |
| Basldn                    | 270   | 59   | 11   | 30           |
| Bradfd                    | 520   | 39   | 6    | 55           |
| Brightn                   | 875   | 45   | 9    | 45           |
| Carlis                    | 227   | 30   | 12   | 58           |
| Carsh                     | 1,488 | 51   | 8    | 41           |
| Chelms                    | 239   | 51   | 9    | 40           |
| Clwyd                     | 153   | 50   | 9    | 41           |
| Colchr                    | 115   | 100  |      |              |
| D & Gall                  | 117   | 38   | 13   | 49           |
| Derby                     | 472   | 46   | 18   | 36           |
| Donc                      | 259   | 63   | 14   | 24           |
| Dorset                    | 628   | 43   | 8    | 50           |
| Dudley                    | 312   | 56   | 18   | 26           |
| Dundee                    | 403   | 43   | 5    | 52           |
| Exeter                    | 896   | 46   | 8    | 46           |
| Glouc                     | 412   | 51   | 8    | 41           |
| Hull                      | 815   | 40   | 10   | 50           |
| Inverns                   | 216   | 32   | 7    | 61           |
| Ipswi                     | 354   | 34   | 8    | 57           |
| Kent                      | 965   | 41   | 7    | 52           |
| Klmarnk                   | 296   | 46   | 15   | 39           |
| Krkldy                    | 283   | 52   | 7    | 41           |
| L Kings                   | 965   | 52   | 11   | 38           |
| Liv Ain                   | 190   | 82   | 16   | 3            |
| Middlbr                   | 836   | 42   | 2    | 56           |
| Newry                     | 199   | 46   | 9    | 45           |

**Table 3.5.** Continued

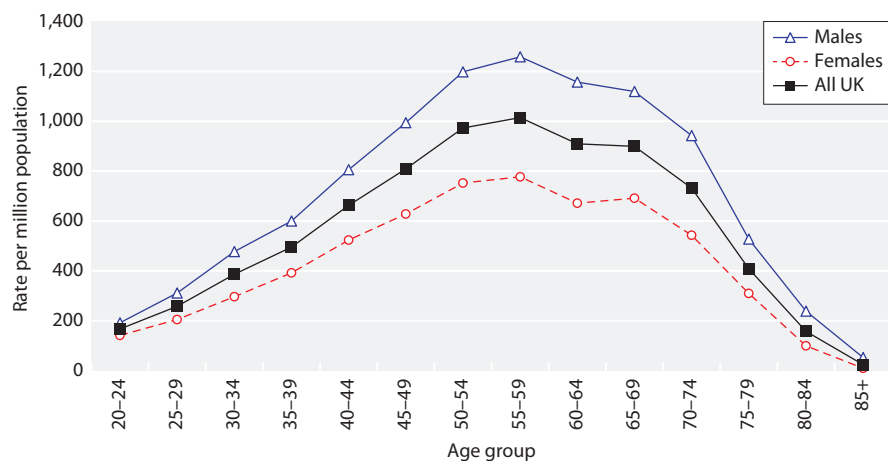
| Centre           | N             | % HD      | % PD     | % Transplant |
|------------------|---------------|-----------|----------|--------------|
| Norwch           | 692           | 48        | 6        | 47           |
| Prestn           | 1,090         | 50        | 5        | 45           |
| Redng            | 731           | 39        | 10       | 51           |
| Salford          | 895           | 45        | 9        | 46           |
| Shrew            | 342           | 55        | 9        | 36           |
| Stevng           | 758           | 61        | 5        | 34           |
| Sthend           | 221           | 54        | 8        | 38           |
| Stoke            | 726           | 43        | 12       | 45           |
| Sund             | 423           | 47        | 3        | 51           |
| Swanse           | 691           | 48        | 8        | 44           |
| Truro            | 377           | 40        | 6        | 54           |
| Ulster           | 156           | 68        | 4        | 28           |
| West NI          | 238           | 47        | 6        | 46           |
| Wirral           | 252           | 85        | 14       | 2            |
| Wolve            | 563           | 53        | 15       | 32           |
| Wrexm            | 250           | 40        | 9        | 51           |
| York             | 409           | 34        | 7        | 59           |
| <b>England</b>   | <b>48,053</b> | <b>42</b> | <b>7</b> | <b>52</b>    |
| <b>N Ireland</b> | <b>1,546</b>  | <b>42</b> | <b>5</b> | <b>53</b>    |
| <b>Scotland</b>  | <b>4,564</b>  | <b>41</b> | <b>5</b> | <b>54</b>    |
| <b>Wales</b>     | <b>2,777</b>  | <b>39</b> | <b>7</b> | <b>55</b>    |
| <b>UK</b>        | <b>56,940</b> | <b>42</b> | <b>6</b> | <b>52</b>    |

Blank cells: no patients on that modality

**Table 3.6.** Median age and gender ratio of incident and prevalent transplant patients 2008–2013

| Year | Incident transplants |            |           | Prevalent transplants* |            |           |
|------|----------------------|------------|-----------|------------------------|------------|-----------|
|      | N                    | Median age | M:F ratio | N                      | Median age | M:F ratio |
| 2008 | 2,345                | 46.4       | 1.5       | 22,287                 | 50.4       | 1.5       |
| 2009 | 2,496                | 48.3       | 1.6       | 23,508                 | 50.8       | 1.5       |
| 2010 | 2,585                | 49.6       | 1.7       | 24,903                 | 51.2       | 1.6       |
| 2011 | 2,633                | 49.1       | 1.7       | 26,197                 | 51.7       | 1.6       |
| 2012 | 2,790                | 50.5       | 1.6       | 27,605                 | 52.2       | 1.6       |
| 2013 | 3,117                | 50.3       | 1.6       | 29,592                 | 52.8       | 1.6       |

\*As on 31st December for given year

**Fig. 3.1.** Transplant prevalence rate per million population by age and gender on 31/12/2013

**Table 3.7.** Primary renal diagnosis in renal transplant recipients 2008–2013

| Primary diagnosis         | New transplants by year |           |           |           |           |           |     | Established transplants on 01/01/2013 |       |
|---------------------------|-------------------------|-----------|-----------|-----------|-----------|-----------|-----|---------------------------------------|-------|
|                           | 2008<br>%               | 2009<br>% | 2010<br>% | 2011<br>% | 2012<br>% | 2013<br>% | N   | %                                     | N     |
| Aetiology uncertain       | 14.6                    | 14.1      | 14.2      | 14.7      | 11.9      | 12.3      | 374 | 15.4                                  | 4,243 |
| Diabetes                  | 13.1                    | 13.3      | 12.5      | 13.0      | 15.2      | 13.3      | 407 | 9.9                                   | 2,737 |
| Glomerulonephritis        | 21.9                    | 23.5      | 20.4      | 23.1      | 22.6      | 22.3      | 680 | 23.4                                  | 6,460 |
| Polycystic kidney disease | 13.4                    | 13.4      | 14.0      | 12.5      | 13.3      | 13.7      | 419 | 12.9                                  | 3,555 |
| Pyelonephritis            | 12.1                    | 11.4      | 10.2      | 10.1      | 10.0      | 9.9       | 302 | 13.5                                  | 3,733 |
| Reno-vascular disease     | 6.7                     | 6.2       | 7.3       | 6.5       | 7.0       | 8.1       | 247 | 5.7                                   | 1,582 |
| Other                     | 16.8                    | 15.7      | 16.4      | 17.2      | 17.5      | 16.0      | 488 | 17.3                                  | 4,769 |
| Not available             | 1.4                     | 2.4       | 5.0       | 3.0       | 2.5       | 4.3       | 132 | 1.9                                   | 526   |

*Primary renal diagnosis*

The primary renal diagnosis of patients receiving kidney transplants in the UK has remained relatively stable over the last five years (table 3.7).

*Ethnicity*

It was difficult to compare the proportion of patients within each ethnic group receiving a transplant to those commencing dialysis from the same group because data on ethnicity were missing in a considerable number of patients who were classified as ethnicity ‘unknown’ (table 3.8). The percentages of patients with unknown ethnicity between 2008 and 2013 provided in this year’s chapter are different from those in last year’s chapter [3]; this reflects retrospective input of ethnicity data, improving data completeness.

**Clinical and laboratory outcomes***Introduction*

There continued to be marked variation in the completeness of data (tables 3.9a, 3.9b) reported by each renal centre, particularly for blood pressure. Better data records

(or possibly better extraction of data held within renal IT systems) would facilitate more meaningful comparisons between centres and help to determine the causes of inter-centre differences in outcomes. For this reason, along with differences in repatriation policies of prevalent transplant patients between centres as highlighted previously, caution needs to be exercised when comparing centre performance.

The 71 renal centres in the UK comprise 52 centres in England, five in Wales, five in Northern Ireland and nine in Scotland. Two centres (Bangor and Colchester) were reported as having no transplanted patients and were therefore excluded. After exclusion of these two centres, prevalent patient data from 69 renal centres across the UK were analysed.

For the one year post-transplant analyses, in which patients were assigned to the centre that performed their transplant, all 23 transplant centres across the UK were included in the analysis.

*Methods*

Data for key laboratory variables are reported for all prevalent patients with valid data returns for a given renal centre (both transplanting and non-transplanting centres) and for one year post-transplant results for patients transplanted 2006–2012, with patients attributed to the transplant centre that performed the procedure.

**Table 3.8.** Ethnicity of patients who received a transplant in the years 2008–2013

| Year | % White | % S Asian | % Black | % Other | % Unknown |
|------|---------|-----------|---------|---------|-----------|
| 2008 | 76.2    | 9.0       | 6.2     | 1.9     | 6.6       |
| 2009 | 74.6    | 10.5      | 6.8     | 2.2     | 6.0       |
| 2010 | 75.2    | 10.5      | 5.8     | 2.3     | 6.1       |
| 2011 | 74.8    | 9.7       | 6.2     | 2.6     | 6.7       |
| 2012 | 72.3    | 9.9       | 7.2     | 3.0     | 7.6       |
| 2013 | 70.0    | 12.3      | 7.5     | 2.0     | 8.1       |

**Table 3.9a.** Percentage completeness of ethnicity, eGFR and blood pressure by centre for prevalent transplant patients on 31/12/2013

| Centre  | N     | Ethnicity <sup>a</sup> | eGFR | Blood pressure <sup>b</sup> | Centre           | N             | Ethnicity <sup>a</sup> | eGFR       | Blood pressure <sup>b</sup> |
|---------|-------|------------------------|------|-----------------------------|------------------|---------------|------------------------|------------|-----------------------------|
| B Heart | 177   | 100                    | 92   | 0                           | Redng            | 361           | 99                     | 99         | 0                           |
| B QEH   | 950   | 100                    | 93   | 93                          | Salford          | 401           | 100                    | 98         | 0                           |
| Basldn  | 79    | 100                    | 99   | 3                           | Sheff            | 660           | 100                    | 99         | 91                          |
| Bradfd  | 278   | 100                    | 89   | 75                          | Shrew            | 122           | 100                    | 65         | 0                           |
| Brightn | 387   | 98                     | 89   | 0                           | Stevng           | 248           | 100                    | 71         | 23                          |
| Bristol | 812   | 100                    | 100  | 73                          | Sthend           | 78            | 100                    | 99         | 59                          |
| Camb    | 744   | 99                     | 99   | 97                          | Stoke            | 318           | 100                    | 99         | 0                           |
| Carlis  | 129   | 100                    | 96   | 0                           | Sund             | 212           | 100                    | 99         | 0                           |
| Carsh   | 587   | 96                     | 86   | 0                           | Truro            | 199           | 100                    | 98         | 2                           |
| Chelms  | 92    | 100                    | 98   | 92                          | Wirral           | 4             | 100                    | 75         | 0                           |
| Covnt   | 455   | 100                    | 96   | 80                          | Wolve            | 177           | 100                    | 98         | 88                          |
| Derby   | 158   | 100                    | 97   | 96                          | York             | 240           | 100                    | 94         | 42                          |
| Donc    | 61    | 100                    | 98   | 97                          | <b>N Ireland</b> |               |                        |            |                             |
| Dorset  | 297   | 100                    | 88   | 78                          | Antrim           | 82            | 100                    | 100        | 74                          |
| Dudley  | 79    | 100                    | 97   | 15                          | Belfast          | 470           | 100                    | 100        | 59                          |
| Exeter  | 403   | 100                    | 98   | 89                          | Newry            | 86            | 100                    | 100        | 88                          |
| Glouc   | 160   | 100                    | 97   | 86                          | Ulster           | 41            | 100                    | 100        | 95                          |
| Hull    | 396   | 98                     | 89   | 1                           | West NI          | 107           | 100                    | 99         | 92                          |
| Ipswi   | 190   | 100                    | 96   | 0                           | <b>Scotland</b>  |               |                        |            |                             |
| Kent    | 492   | 99                     | 64   | 88                          | Abrdn            | 259           | 58                     | 97         | n/a                         |
| L Barts | 910   | 100                    | 99   | 0                           | Airdrie          | 184           | 47                     | 67         | n/a                         |
| L Guys  | 1,147 | 99                     | 96   | 0                           | D & Gall         | 56            | 23                     | 89         | n/a                         |
| L Kings | 349   | 100                    | 97   | 99                          | Dundee           | 204           | 71                     | 99         | n/a                         |
| L RFree | 1,064 | 98                     | 96   | 77                          | Edinb            | 415           | 13                     | 96         | n/a                         |
| L St.G  | 403   | 95                     | 96   | 0                           | Glasgw           | 921           | 13                     | 79         | n/a                         |
| L West  | 1,640 | 100                    | 98   | 0                           | Inverns          | 131           | 92                     | 82         | n/a                         |
| Leeds   | 860   | 100                    | 98   | 98                          | Klmarnk          | 115           | 74                     | 69         | n/a                         |
| Leic    | 976   | 97                     | 97   | 49                          | Krkldy           | 114           | 31                     | 96         | n/a                         |
| Liv Ain | 4     | 100                    | 75   | 0                           | <b>Wales</b>     |               |                        |            |                             |
| Liv Roy | 832   | 99                     | 93   | 0                           | Cardff           | 1,000         | 100                    | 98         | 97                          |
| M RI    | 1,188 | 99                     | 98   | 0                           | Clwyd            | 63            | 97                     | 0          | 0                           |
| Middlbr | 449   | 100                    | 88   | 42                          | Swanse           | 287           | 100                    | 99         | 100                         |
| Newc    | 621   | 100                    | 99   | 0                           | Wrexm            | 127           | 100                    | 74         | 0                           |
| Norwch  | 316   | 100                    | 98   | 31                          | <b>England</b>   | <b>23,890</b> | <b>99</b>              | <b>95</b>  | <b>38</b>                   |
| Nottm   | 592   | 100                    | 99   | 86                          | <b>N Ireland</b> | <b>786</b>    | <b>100</b>             | <b>100</b> | <b>70</b>                   |
| Oxford  | 990   | 97                     | 98   | 15                          | <b>Scotland</b>  | <b>2,399</b>  | <b>34</b>              | <b>85</b>  | <b>n/a</b>                  |
| Plymth  | 310   | 100                    | 93   | 82                          | <b>Wales</b>     | <b>1,477</b>  | <b>100</b>             | <b>92</b>  | <b>85</b>                   |
| Ports   | 825   | 100                    | 95   | 20                          | <b>UK</b>        | <b>28,552</b> | <b>94</b>              | <b>94</b>  | <b>42<sup>c</sup></b>       |
| Prestn  | 468   | 100                    | 98   | 0                           |                  |               |                        |            |                             |

<sup>a</sup>Patients with missing ethnicity were classed as White for eGFR calculation<sup>b</sup>Scottish centres excluded from blood pressure analysis as data not provided by the Scottish Renal Registry<sup>c</sup>Excluding Scotland

Time since transplantation may have a significant effect on key biochemical and clinical variables and this is likely to be independent of a centre's clinical practices. Therefore, inter-centre comparison of data on prevalent transplant patients is open to bias. To minimise bias relating to fluctuations in biochemical and clinical parameters occurring in the initial post-transplant period, one year post-transplantation outcomes are also reported. It is presumed that patient selection policies and local clinical practices are more likely to be relevant in influencing outcomes 12 months post-transplant and therefore comparison of outcomes between centres is more robust. However, even the 12 months

post-transplant comparisons could be biased by the fact that in some centres, repatriation of patients only occurs if the graft is failing whereas in others it only occurs if the graft function is stable.

Centres with <20 patients or <50% data completeness have been excluded from the figures. Scottish centres were also excluded from blood pressure analyses as data were not provided.

#### *Prevalent patient data*

Biochemical and clinical data for patients with a functioning transplant followed in either a transplanting or non-transplanting centre were included in the analyses. The cohort consisted of

**Table 3.9b.** Percentage completeness of haemoglobin, serum cholesterol, serum calcium, serum phosphate and serum PTH by centre for prevalent transplant patients on 31/12/2013

| Centre         | N     | Haemoglobin | Total serum cholesterol <sup>a</sup> | Adjusted serum calcium <sup>a,b</sup> | Serum phosphate | Serum PTH <sup>a</sup> |
|----------------|-------|-------------|--------------------------------------|---------------------------------------|-----------------|------------------------|
| <b>England</b> |       |             |                                      |                                       |                 |                        |
| B Heart        | 177   | 92          | 65                                   | 89                                    | 88              | 23                     |
| B QEH          | 950   | 92          | 90                                   | 93                                    | 92              | 72                     |
| Basldn         | 79    | 99          | 49                                   | 99                                    | 94              | 44                     |
| Bradfd         | 278   | 87          | 73                                   | 78                                    | 62              | 46                     |
| Brightn        | 387   | 88          | 29                                   | 82                                    | 81              | 31                     |
| Bristol        | 812   | 100         | 94                                   | 100                                   | 99              | 99                     |
| Camb           | 744   | 98          | 97                                   | 99                                    | 99              | 97                     |
| Carlis         | 129   | 95          | 61                                   | 95                                    | 91              | 9                      |
| Carsh          | 587   | 80          | 60                                   | 86                                    | 86              | 19                     |
| Chelms         | 92    | 96          | 89                                   | 98                                    | 93              | 26                     |
| Covnt          | 455   | 96          | 0                                    | 95                                    | 70              | 40                     |
| Derby          | 158   | 96          | 94                                   | 96                                    | 96              | 92                     |
| Donc           | 61    | 97          | 44                                   | 93                                    | 93              | 64                     |
| Dorset         | 297   | 87          | 77                                   | 83                                    | 65              | 28                     |
| Dudley         | 79    | 97          | 92                                   | 97                                    | 96              | 70                     |
| Exeter         | 403   | 98          | 86                                   | 97                                    | 97              | 25                     |
| Glouc          | 160   | 96          | 66                                   | 96                                    | 96              | 24                     |
| Hull           | 396   | 89          | 27                                   | 89                                    | 88              | 7                      |
| Ipswi          | 190   | 95          | 57                                   | 96                                    | 96              | 67                     |
| Kent           | 492   | 97          | 77                                   | 95                                    | 95              | 17                     |
| L Barts        | 910   | 98          | 99                                   | 99                                    | 99              | 92                     |
| L Guys         | 1,147 | 0           | 55                                   | 90                                    | 90              | 40                     |
| L Kings        | 349   | 97          | 79                                   | 97                                    | 97              | 32                     |
| L RFree        | 1,064 | 95          | 81                                   | 95                                    | 95              | 77                     |
| L St.G         | 403   | 96          | 81                                   | 95                                    | 95              | 84                     |
| L West         | 1,640 | 98          | 45                                   | 98                                    | 98              | 36                     |
| Leeds          | 860   | 98          | 99                                   | 98                                    | 98              | 49                     |
| Leic           | 976   | 97          | 97                                   | 96                                    | 96              | 52                     |
| Liv Ain        | 4     | 75          | 25                                   | 75                                    | 75              | 50                     |
| Liv Roy        | 832   | 92          | 77                                   | 90                                    | 90              | 74                     |
| M RI           | 1,188 | 98          | 65                                   | 98                                    | 98              | 64                     |
| Middlbr        | 449   | 88          | 50                                   | 86                                    | 85              | 10                     |
| Newc           | 621   | 99          | 87                                   | 99                                    | 99              | 62                     |
| Norwch         | 316   | 98          | 97                                   | 95                                    | 98              | 30                     |
| Nottm          | 592   | 98          | 84                                   | 96                                    | 93              | 88                     |
| Oxford         | 990   | 98          | 74                                   | 98                                    | 98              | 34                     |
| Plymth         | 310   | 92          | 56                                   | 88                                    | 87              | 39                     |
| Ports          | 825   | 95          | 57                                   | 93                                    | 88              | 24                     |
| Prestn         | 468   | 97          | 71                                   | 95                                    | 94              | 58                     |
| Redng          | 361   | 99          | 92                                   | 98                                    | 85              | 48                     |
| Salford        | 401   | 98          | 87                                   | 97                                    | 97              | 80                     |
| Sheff          | 660   | 99          | 65                                   | 98                                    | 98              | 26                     |
| Shrew          | 122   | 81          | 79                                   | 72                                    | 72              | 14                     |
| Stevng         | 248   | 96          | 81                                   | 92                                    | 80              | 57                     |
| Sthend         | 78    | 99          | 35                                   | 99                                    | 96              | 8                      |
| Stoke          | 318   | 99          | 100                                  | 99                                    | 98              | 69                     |
| Sund           | 212   | 98          | 96                                   | 98                                    | 97              | 95                     |
| Truro          | 199   | 97          | 61                                   | 97                                    | 97              | 34                     |
| Wirral         | 4     | 75          | 75                                   | 75                                    | 75              | 75                     |
| Wolve          | 177   | 96          | 86                                   | 93                                    | 83              | 64                     |
| York           | 240   | 94          | 64                                   | 89                                    | 86              | 20                     |

**Table 3.9b.** Continued

| Centre                      | N             | Haemoglobin | Total serum cholesterol <sup>a</sup> | Adjusted serum calcium <sup>a,b</sup> | Serum phosphate | Serum PTH <sup>a</sup> |
|-----------------------------|---------------|-------------|--------------------------------------|---------------------------------------|-----------------|------------------------|
| <b>N Ireland</b>            |               |             |                                      |                                       |                 |                        |
| Antrim                      | 82            | 100         | 100                                  | 95                                    | 100             | 98                     |
| Belfast                     | 470           | 99          | 100                                  | 98                                    | 98              | 26                     |
| Newry                       | 86            | 100         | 100                                  | 98                                    | 99              | 99                     |
| Ulster                      | 41            | 100         | 100                                  | 98                                    | 98              | 39                     |
| West NI                     | 107           | 97          | 99                                   | 96                                    | 96              | 92                     |
| <b>Scotland</b>             |               |             |                                      |                                       |                 |                        |
| Abrdn                       | 259           | 96          | n/a                                  | n/a                                   | 95              | n/a                    |
| Airdrie                     | 184           | 98          | n/a                                  | n/a                                   | 97              | n/a                    |
| D & Gall                    | 56            | 95          | n/a                                  | n/a                                   | 88              | n/a                    |
| Dundee                      | 204           | 99          | n/a                                  | n/a                                   | 98              | n/a                    |
| Edinb                       | 415           | 95          | n/a                                  | n/a                                   | 93              | n/a                    |
| Glasgw                      | 921           | 97          | n/a                                  | n/a                                   | 97              | n/a                    |
| Inverns                     | 131           | 79          | n/a                                  | n/a                                   | 63              | n/a                    |
| Klmarnk                     | 115           | 97          | n/a                                  | n/a                                   | 96              | n/a                    |
| Krkldy                      | 114           | 96          | n/a                                  | n/a                                   | 96              | n/a                    |
| <b>Wales</b>                |               |             |                                      |                                       |                 |                        |
| Cardff                      | 1,000         | 99          | 97                                   | 99                                    | 98              | 23                     |
| Clwyd                       | 63            | 95          | 98                                   | 95                                    | 95              | 78                     |
| Swanse                      | 287           | 96          | 88                                   | 96                                    | 96              | 70                     |
| Wrexm                       | 127           | 95          | 98                                   | 95                                    | 95              | 98                     |
| <b>England</b>              | <b>23,890</b> | <b>91</b>   | <b>73</b>                            | <b>95</b>                             | <b>93</b>       | <b>52</b>              |
| <b>N Ireland</b>            | <b>786</b>    | <b>99</b>   | <b>100</b>                           | <b>97</b>                             | <b>98</b>       | <b>51</b>              |
| <b>Scotland<sup>a</sup></b> | <b>2,399</b>  | <b>96</b>   | <b>n/a</b>                           | <b>n/a</b>                            | <b>94</b>       | <b>n/a</b>             |
| <b>Wales</b>                | <b>1,477</b>  | <b>98</b>   | <b>95</b>                            | <b>98</b>                             | <b>97</b>       | <b>41</b>              |
| <b>UK</b>                   | <b>28,552</b> | <b>92</b>   | <b>75<sup>c</sup></b>                | <b>95<sup>c</sup></b>                 | <b>93</b>       | <b>52<sup>c</sup></b>  |

<sup>a</sup>Dataset provided by the Scottish Renal Registry for Scottish centres shown did not include data on serum cholesterol, serum calcium or serum PTH

<sup>b</sup>Serum calcium corrected for serum albumin

<sup>c</sup>Excluding Scotland

prevalent patients as on 31st December 2013. Patients were considered as having a functioning transplant if 'transplant' was listed as the last mode of RRT in the last quarter of 2013. Patients were assigned to the renal centre that sent the data to the UKRR but some patients will have received care in more than one centre. If data for the same transplant patient were received from both the transplant centre and non-transplant centre, care was usually allocated to the non-transplant centre (see appendix B2). Patients with a functioning transplant of less than three months duration were excluded from analyses. For haemoglobin, estimated glomerular filtration rate (eGFR), corrected calcium, phosphate and blood pressure (BP), the latest value in quarter 3 or quarter 4 of 2013 was used.

#### *Estimated glomerular filtration rate (eGFR)*

For the purpose of eGFR calculation, the original 4-variable MDRD formula was used (with a constant of 186) to calculate eGFR from the serum creatinine concentration as reported by the centre (unless otherwise stated). A wide variety of creatinine assays are in use in clinical biochemistry laboratories in the UK, and it is not possible to ensure that all measurements of creatinine concentration collected by the UKRR are harmonised. Although many laboratories are now reporting assay results that have been aligned to the isotope dilution-mass spectrometry standard

(which would necessitate use of the modified MDRD formula), this was not the case at the end of 2013. Patients with valid serum creatinine results but no ethnicity data were classed as White for the purpose of the eGFR calculation.

#### *One year post-transplant data*

Patients who received a renal transplant between 1st January 2006 and 31st December 2012 were assigned according to the renal centre in which they were transplanted. In a small number of instances, the first documented evidence of transplantation in a patient's record is from a timeline entry in data returned from a non-transplant centre, in these instances the patient was re-assigned to the nearest transplant centre (table 3.10).

Patients who had died or experienced graft failure within 12 months of transplantation were excluded from the analyses. Patients with more than one transplant during 2006–2012 were included as separate episodes provided each of the transplants functioned for a year.

For each patient, the most recent laboratory or blood pressure result for the relevant 4th/5th quarter after renal transplantation was taken to be representative of the one year post-transplant outcome. Again, for the purpose of the eGFR calculation patients with valid serum creatinine results but missing ethnicity data were classed as White.

**Table 3.10.** Number of patients per transplant centre after allocation of patients at non-transplant centres (transplanted between 2006–2012)

| Transplant centre | Total number of patients per transplant centre | Non-transplant centre | Number of patients relocated to a transplant centre |
|-------------------|--|-----------------------|---|
| B QEH             | 899  | Stoke                 | 2   |
| Belfast           | 381  | Antrim                | 2   |
|                   |  | Newry                 | 4   |
|                   |  | Ulster                | 3   |
|                   |  | West NI               | 4   |
| Bristol           | 678  | Dorset                | 3   |
| Camb              | 1,115  |                       |   |
| Cardff            | 790  | Swansea               | 2   |
| Covnt             | 369  |                       |   |
| Edinb             | 644  | Abrdn                 | 1   |
|                   |  | Dundee                | 6   |
|                   |  | Inverns               | 2   |
|                   |  | Airdrie               | 2   |
| Glasgw            | 635  |                       |   |
| L Barts           | 731  |                       |   |
| L Guys            | 1,276  | L Kings               | 3   |
| L Rfree           | 647  |                       |   |
| L St.G            | 581  | Brightn               | 1   |
|                   |  | Carsh                 | 1   |
| L West            | 1,129  |                       |   |
| Leeds             | 949  |                       |   |
| Leic              | 540  |                       |   |
| Liv Roy           | 594  | Prestn                | 1   |
| M RI              | 1,087  |                       |   |
| Newc              | 809  | Middlbr               | 1   |
| Nottm             | 414  |                       |   |
| Oxford            | 1,151  |                       |   |
| Plymth            | 421  |                       |   |
| Ports             | 438  |                       |   |
| Sheff             | 410  |                       |   |
| <b>Total</b>      | <b>16,688</b>                                  |                       | <b>38</b>   |

### Results and conclusions

#### Post-transplant eGFR in prevalent transplant patients

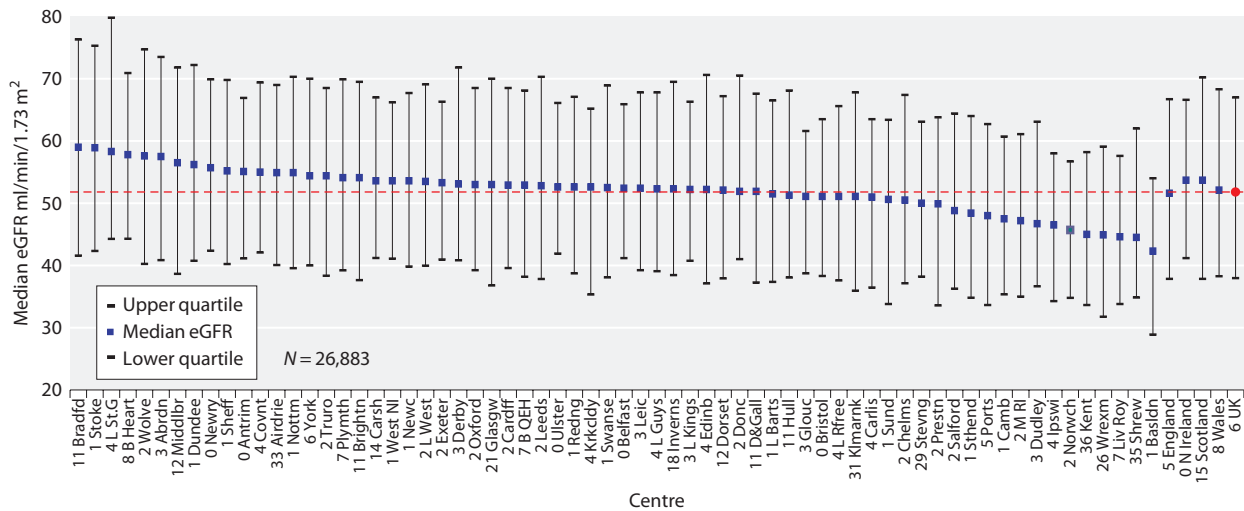
When interpreting eGFR post-transplantation, it is important to remember that estimated GFR formulae only have a modest predictive performance in the transplant population [4]. Median eGFR in each centre and percentage of patients with eGFR <30 ml/min/1.73 m<sup>2</sup> are shown in figures 3.2 and 3.3. The median eGFR was 51.8 ml/min/1.73 m<sup>2</sup>, with 13.4% of prevalent transplant recipients having an eGFR <30 ml/min/1.73 m<sup>2</sup>. Table 3.11 summarises the proportion of transplant patients with an eGFR <30 ml/min/1.73 m<sup>2</sup> by centre. Whilst local repatriation policies on timing of transfer of care for patients with failing transplants from transplant centres to referring centres might explain some of the differences, it is notable that both transplanting and non-transplanting centres feature at both ends of

the scale. The accuracy of the 4-variable MDRD equation in estimating GFR  $\geq 60$  ml/min/1.73 m<sup>2</sup> is questionable [5], therefore a figure describing this is not included in this chapter.

Figure 3.4 shows the percentage of prevalent patients by centre with eGFR <30 ml/min/1.73 m<sup>2</sup> as a funnel plot, enabling a more reliable comparison of outcomes between centres across the UK. The solid lines show the 2 standard deviation limits (95%) and the dotted lines the limits for 3 standard deviations (99.9%). With 66 centres included and a normal distribution, 3–4 centres would be expected to fall between the 95–99.9% CI (1 in 20) and no centres should fall outside the 99.9% limits.

There continued to be variation between centres; these data show over-dispersion with 16 centres falling outside the 95% CI of which six centres were outside the 99.9% CI. Three centres (Newry, London St Georges, London





**Fig. 3.2.** Median eGFR in prevalent transplant patients by centre on 31/12/2013

West) fell outside the lower 99.9% CI suggesting a lower than expected proportion of patients with eGFR <30 ml/min/1.73 m<sup>2</sup>. Liverpool Royal, Portsmouth and Preston fell outside the upper 99.9% CI suggesting a higher than expected proportion of patients with eGFR <30 ml/min/1.73 m<sup>2</sup>.

*eGFR in patients one year after transplantation*

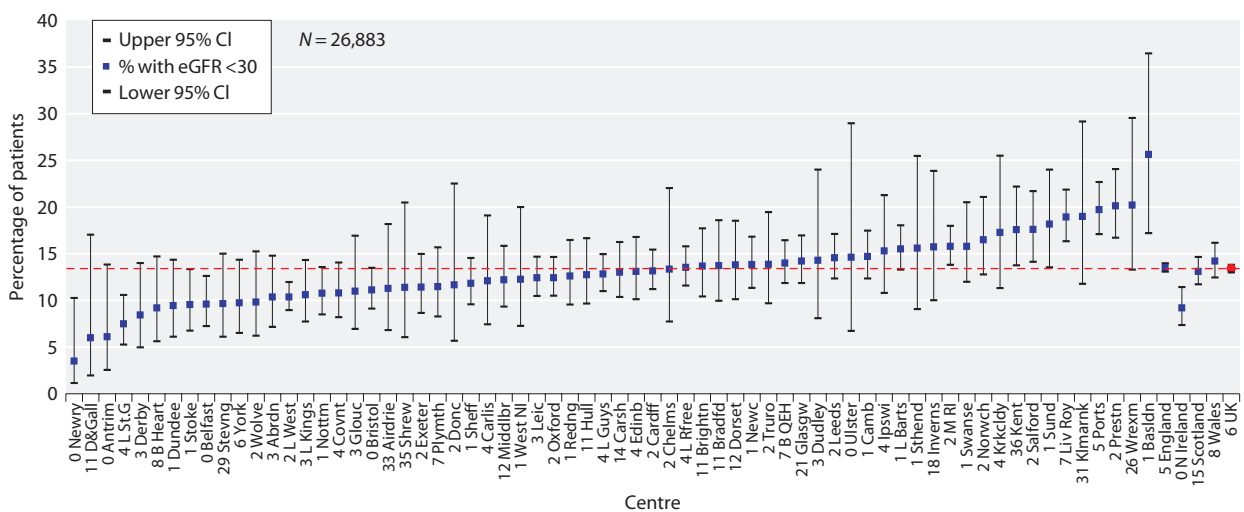
Graft function at one year post-transplantation may predict subsequent long term graft outcome [6]. Figures 3.5a, 3.5b, and 3.5c show the median one year post-transplant eGFR for patients transplanted between 2006–2012, by transplant type. Living kidney donation had the highest median eGFR at one year (56.9 ml/min/

1.73 m<sup>2</sup>), followed by donation after brainstem death (53 ml/min/1.73 m<sup>2</sup>) and donation after circulatory death (49.7 ml/min/1.73 m<sup>2</sup>).

Figures 3.6a, 3.6b and 3.6c show one year post-transplant eGFR by donor type and year of transplantation. An upward trend in eGFR ( $p = 0.001$ ) over the time period was noticed with both live and donation after brainstem death transplant, but not with donation after circulatory death ( $p = 0.4$ ).

*Haemoglobin in prevalent transplant patients*

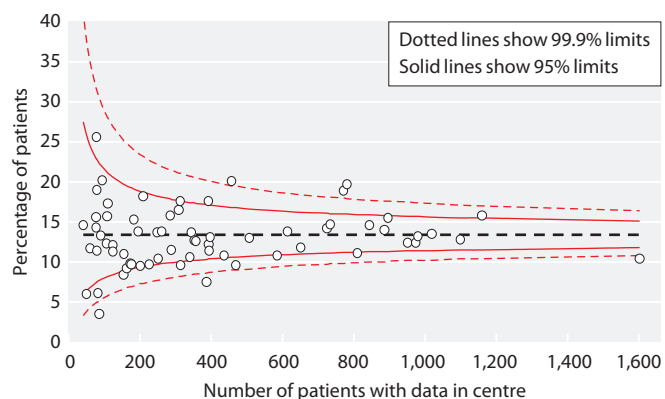
Transplant patients have previously fallen under the remit of the UK Renal Association Complications of Chronic Kidney Disease (CKD) guidelines. Updated



**Fig. 3.3.** Percentage of prevalent transplant patients by centre on 31/12/2013 with eGFR <30 ml/min/1.73 m<sup>2</sup>

**Table 3.11.** Percentage of prevalent transplant patients with eGFR <30 ml/min/1.73 m<sup>2</sup> on 31/12/2013

| Centre   | Patients with eGFR data<br>N | Percentage with<br>eGFR <30 | Centre  | Patients with eGFR data<br>N | Percentage with<br>eGFR <30 |
|----------|------------------------------|-----------------------------|---------|------------------------------|-----------------------------|
| Ulster   | 41                           | 14.6                        | Kent    | 313                          | 17.6                        |
| D & Gall | 50                           | 6                           | Stoke   | 314                          | 9.6                         |
| Donc     | 60                           | 11.7                        | L Kings | 340                          | 10.6                        |
| Sthend   | 77                           | 15.6                        | Brightn | 344                          | 13.7                        |
| Dudley   | 77                           | 14.3                        | Hull    | 353                          | 12.7                        |
| Basldn   | 78                           | 25.6                        | Redng   | 357                          | 12.6                        |
| Shrew    | 79                           | 11.4                        | L St.G  | 387                          | 7.5                         |
| Klmarnk  | 79                           | 19.0                        | Salford | 392                          | 17.6                        |
| Antrim   | 82                           | 6.1                         | Middlbr | 393                          | 12.2                        |
| Newry    | 86                           | 3.5                         | Exeter  | 394                          | 11.4                        |
| Chelms   | 90                           | 13.3                        | Edinb   | 397                          | 13.1                        |
| Wrexm    | 94                           | 20.2                        | Covnt   | 436                          | 10.8                        |
| West NI  | 106                          | 12.3                        | Prestn  | 457                          | 20.1                        |
| Inverns  | 108                          | 15.7                        | Belfast | 469                          | 9.6                         |
| Krkldy   | 110                          | 17.3                        | Carsh   | 507                          | 13.0                        |
| Carlis   | 124                          | 12.1                        | Nottm   | 585                          | 10.8                        |
| Airdrie  | 124                          | 11.3                        | Newc    | 614                          | 13.8                        |
| Derby    | 154                          | 8.4                         | Sheff   | 651                          | 11.8                        |
| Glouc    | 155                          | 11.0                        | Glasgw  | 725                          | 14.2                        |
| B Heart  | 163                          | 9.2                         | Camb    | 734                          | 14.7                        |
| Wolve    | 173                          | 9.8                         | Liv Roy | 771                          | 18.9                        |
| Stevng   | 176                          | 9.7                         | Ports   | 781                          | 19.7                        |
| Ipswi    | 183                          | 15.3                        | Bristol | 810                          | 11.1                        |
| Truro    | 195                          | 13.8                        | Leeds   | 844                          | 14.6                        |
| Dundee   | 201                          | 9.5                         | B QEH   | 886                          | 14.0                        |
| Sund     | 209                          | 18.2                        | L Barts | 896                          | 15.5                        |
| York     | 226                          | 9.7                         | Leic    | 951                          | 12.4                        |
| Bradfd   | 248                          | 13.7                        | Oxford  | 974                          | 12.4                        |
| Abrdn    | 251                          | 10.4                        | Cardff  | 980                          | 13.2                        |
| Dorset   | 261                          | 13.8                        | L Rfree | 1,019                        | 13.5                        |
| Swanse   | 285                          | 15.8                        | L Guys  | 1,099                        | 12.8                        |
| Plymth   | 288                          | 11.5                        | M RI    | 1,160                        | 15.8                        |
| Norwch   | 309                          | 16.5                        | L West  | 1,602                        | 10.4                        |

**Fig. 3.4.** Funnel plot of percentage of prevalent transplant patients with eGFR <30 ml/min/1.73 m<sup>2</sup> by centre size on 31/12/2013

guidelines regarding the management of anaemia in CKD were published by the association in November 2010 [7] which have now been adopted for this report. These guidelines recommend '*achieving a population distribution centred on a mean of 11 g/dl with a range of 10–12 g/dl*' [8] (equivalent to 110 g/L, range 100–120 g/L). However, many transplant patients with good transplant function will have haemoglobin concentrations >120 g/L without the use of erythropoiesis stimulating agents, and so it is inappropriate to audit performance using the higher limit.

A number of factors including comorbidity, immunosuppressive medication, graft function, ACE inhibitor use, erythropoietin (EPO) use, intravenous or oral iron use, as well as centre practices and protocols for management of anaemia, affect haemoglobin concentrations in transplant patients. Most of these data are not collected

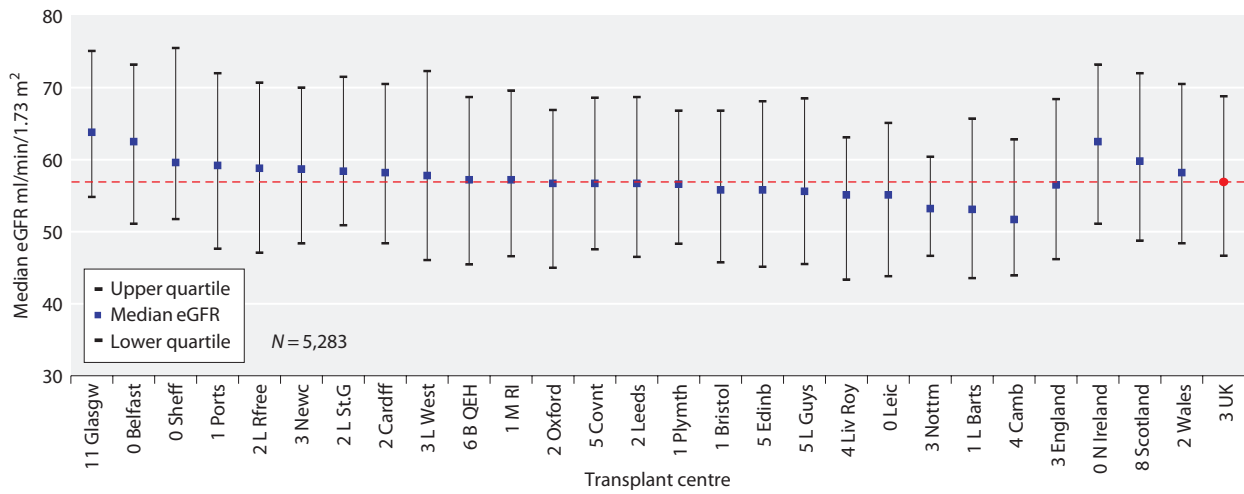


Fig. 3.5a. Median eGFR one year post-live donor transplant by transplant centre 2006–2012

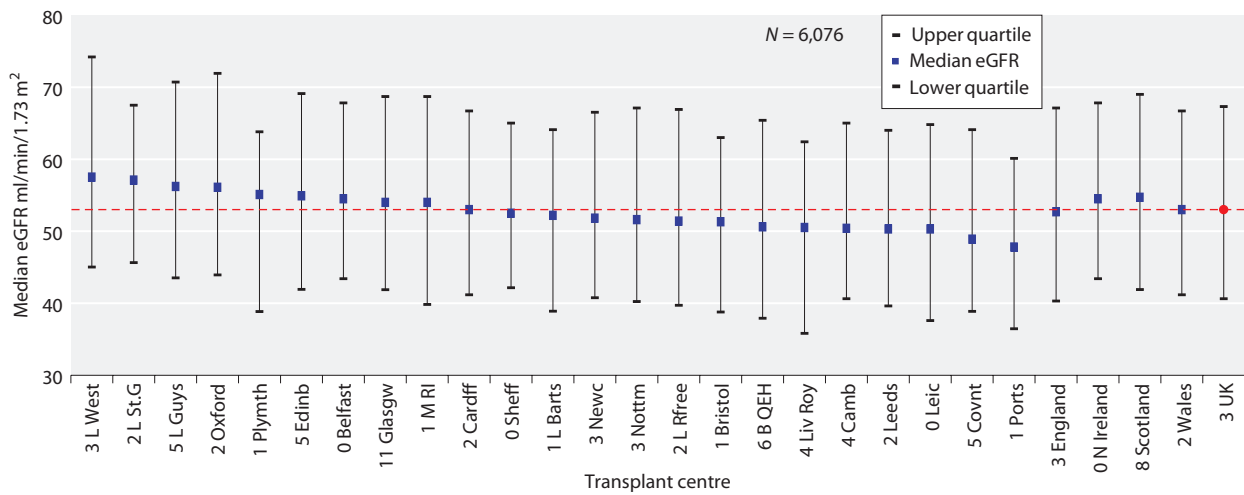


Fig. 3.5b. Median eGFR one year post-brainstem death donor transplant by transplant centre 2006–2012

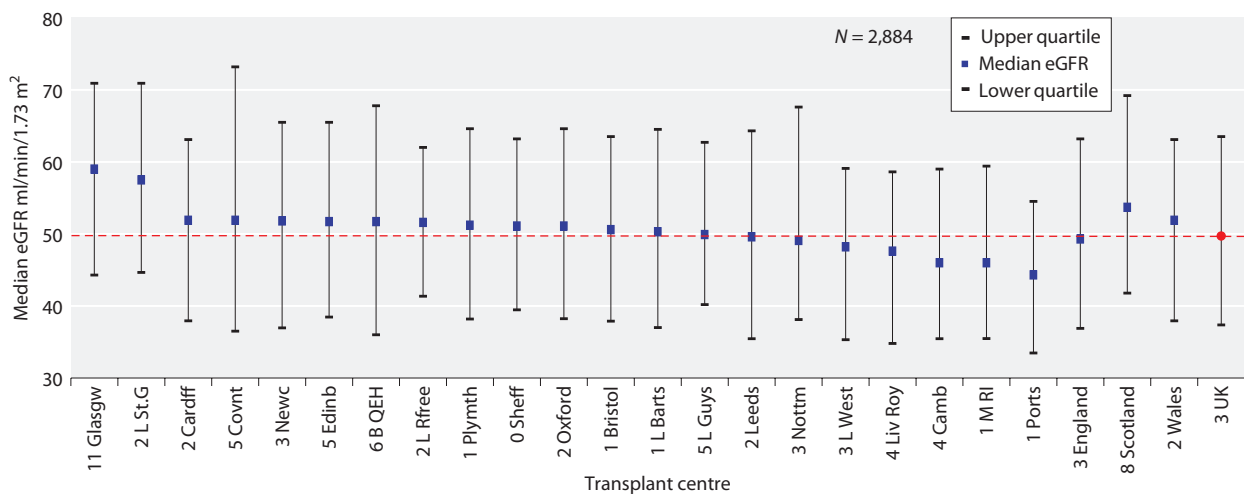
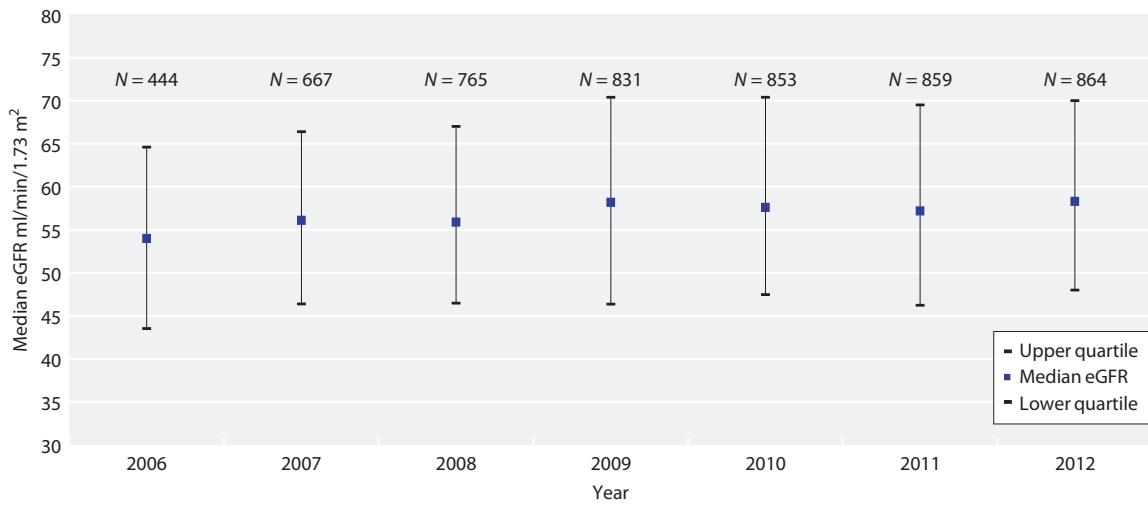
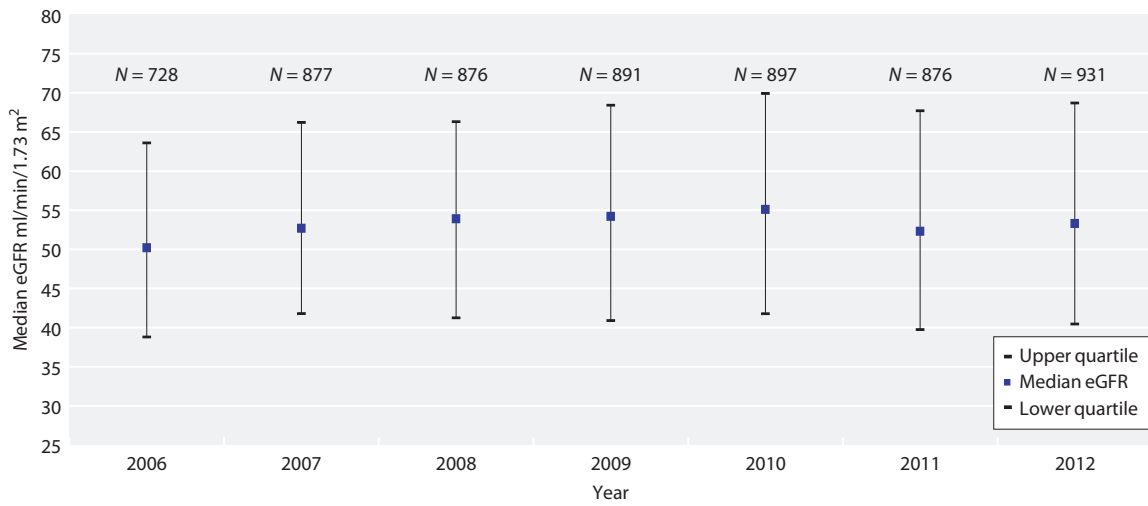


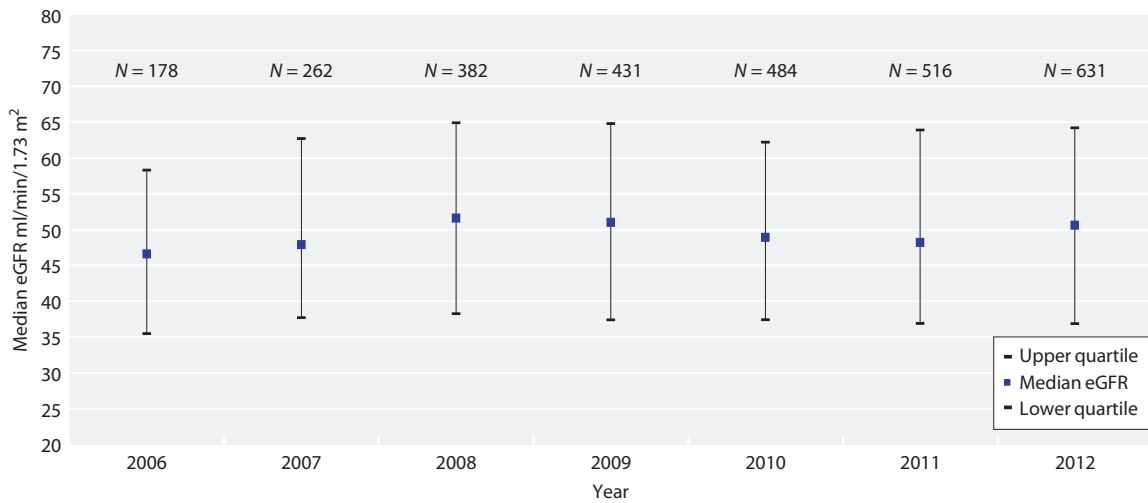
Fig. 3.5c. Median eGFR one year post-circulatory death donor transplant by transplant centre 2006–2012



**Fig. 3.6a.** Median eGFR one year post-live donor transplant by year of transplantation 2006–2012



**Fig. 3.6b.** Median eGFR one year post-brainstem death donor transplant by year of transplantation 2006–2012



**Fig. 3.6c.** Median eGFR one year post-circulatory death donor transplant by year of transplantation 2006–2012

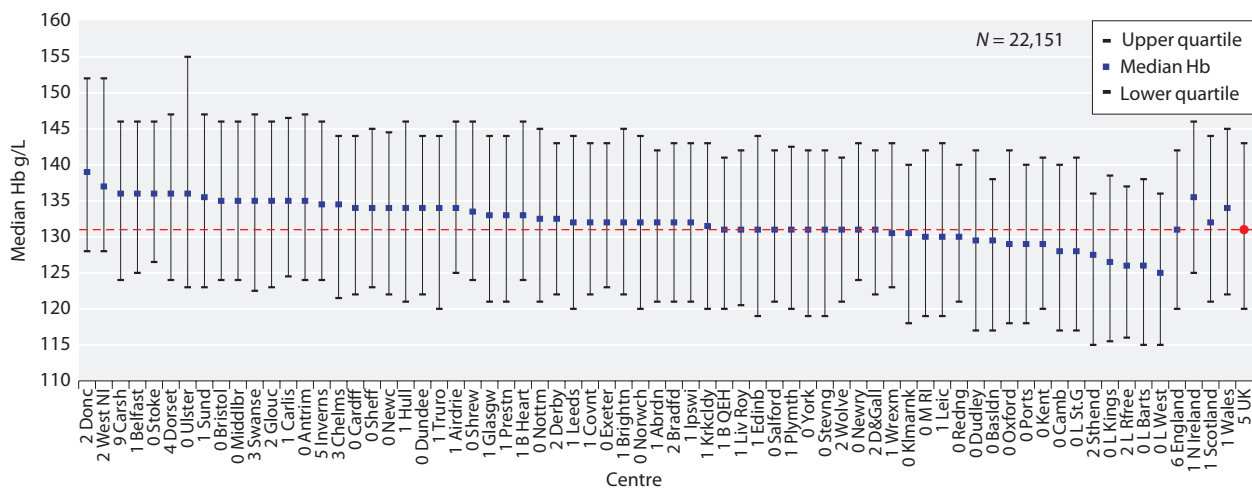
by the UKRR and therefore caution must be used when interpreting analyses of haemoglobin attainment. Figures 3.7a and 3.7b report centre results stratified according to graft function as estimated by eGFR. The percentage of prevalent transplant patients achieving Hb  $\geq 100$  g/L in each centre, stratified by eGFR, is displayed in figures 3.8a and 3.8b.

Figure 3.9 describes the percentage of prevalent patients by centre with haemoglobin  $<100$  g/L as a funnel plot enabling more reliable comparison of outcomes between centres across the UK. With 66 centres included and a normal distribution, 3–4 centres would be expected to fall between the 95%–99.9% CI (1 in 20) and no centres should fall outside the 99.9% CI purely as a chance event.

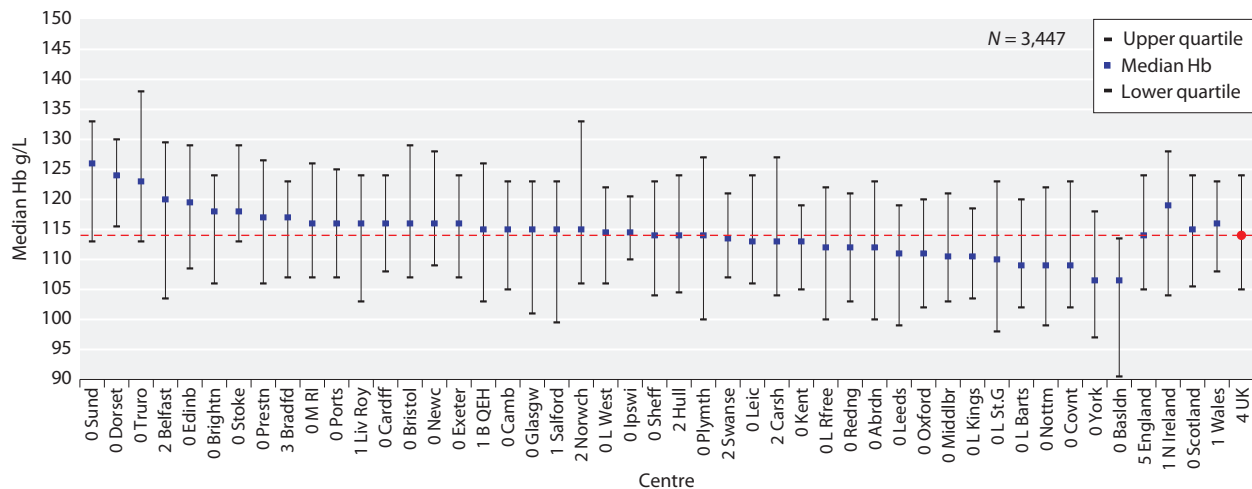
Two centres (London St Bartholemews and London Royal Free) fell outside the upper 99.9% CI and two further centres (Leeds and Oxford) fell outside the upper 95% CI indicating a higher than predicted proportion of transplant patients not achieving the haemoglobin target. Six centres fell outside the lower 99.9% CI, indicating they performed better than expected with fewer than predicted patients having a haemoglobin  $<100$  g/L.

*Blood pressure in prevalent transplant patients*

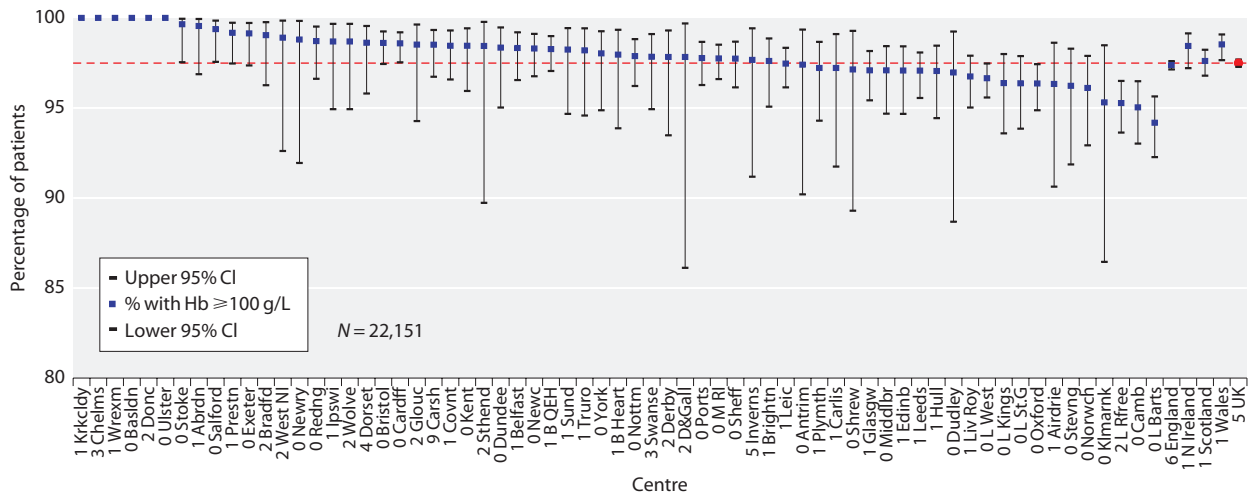
In the absence of controlled trial data, the opinion based recommendation of the UK Renal Association (RA) published in the 2010 guideline for the care of kidney transplant recipients is that **'Blood pressure should be**



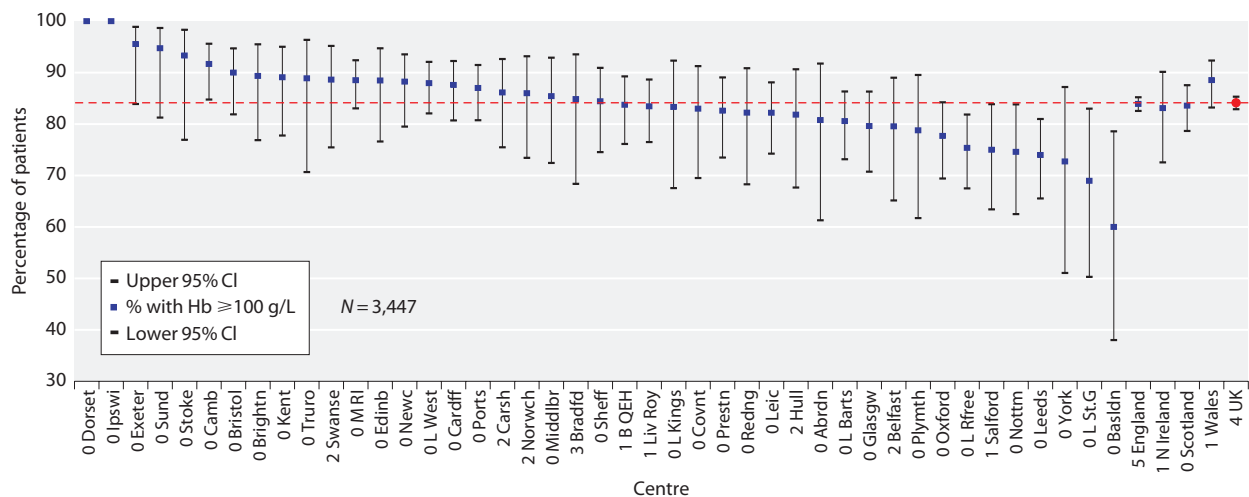
**Fig. 3.7a.** Median haemoglobin for prevalent transplant patients with eGFR  $\geq 30$  ml/min/1.73 m<sup>2</sup> by centre on 31/12/2013



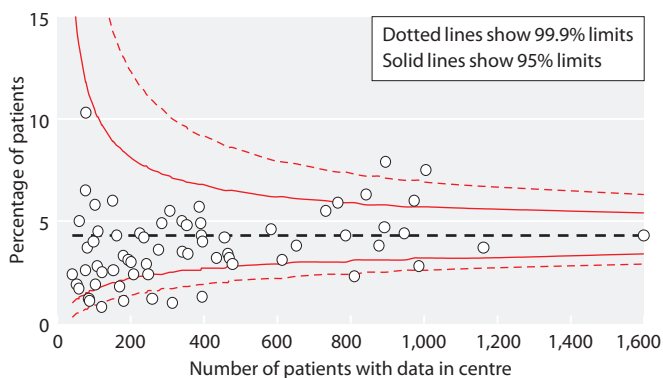
**Fig. 3.7b.** Median haemoglobin for prevalent transplant patients with eGFR  $< 30$  ml/min/1.73 m<sup>2</sup> by centre on 31/12/2013



**Fig. 3.8a.** Percentage of prevalent transplant patients with eGFR  $\geq 30$  ml/min/1.73 m<sup>2</sup> achieving haemoglobin  $\geq 100$  g/L by centre on 31/12/2013



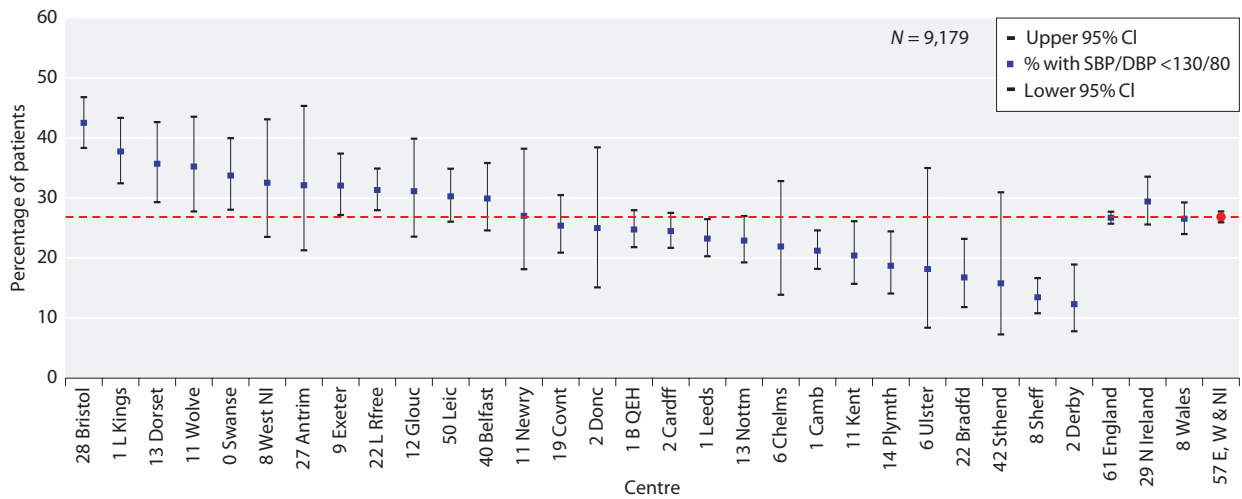
**Fig. 3.8b.** Percentage of prevalent transplant patients with eGFR  $< 30$  ml/min/1.73 m<sup>2</sup> achieving haemoglobin  $\geq 100$  g/L by centre on 31/12/2013



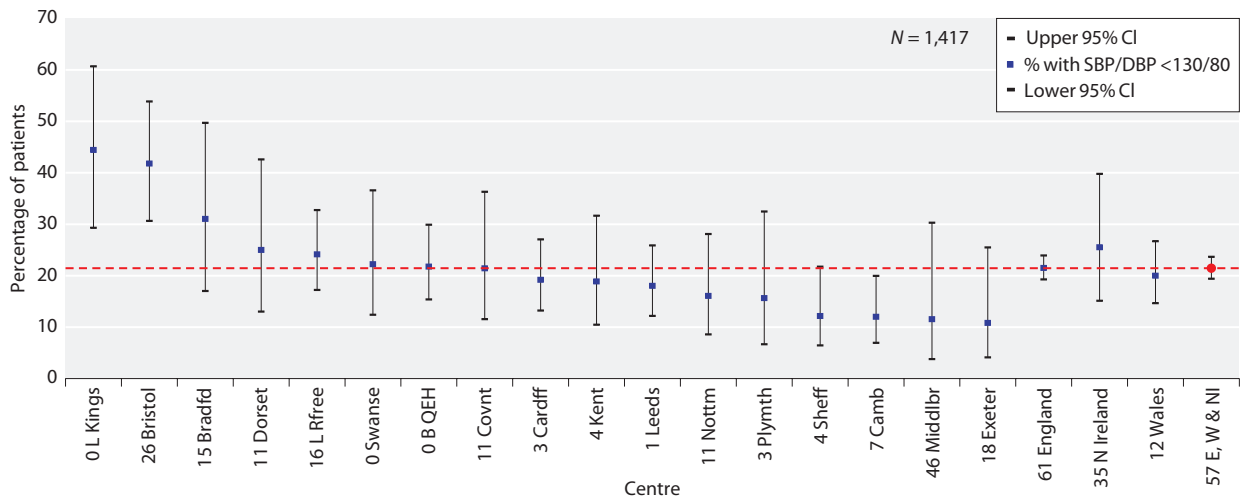
**Fig. 3.9.** Funnel plot of percentage of prevalent transplant patients with a blood pressure of  $<130/80$  mmHg, by eGFR. The percentage of patients with BP  $<130/80$  (systolic

$<130/80$  mmHg (or  $<125/75$  mmHg if proteinuria)' [9]. This blood pressure target is the same as that used in previous annual reports [10].

As indicated in table 3.9a, completeness for blood pressure data returns was variable and only centres with  $>50\%$  data returns were included for consideration. Despite this restriction, caution needs to be exercised in interpretation of these results because of the volume of missing data and potential bias, (e.g. a centre may be more likely to record and report blood pressure data electronically in patients with poor BP control). Figures 3.10a and 3.10b show the percentage of patients with BP  $<130/80$  (systolic



**Fig. 3.10a.** Percentage of prevalent transplant patients with eGFR  $\geq 30$  ml/min/1.73 m<sup>2</sup> achieving blood pressure of <130/80 mmHg by centre on 31/12/2013



**Fig. 3.10b.** Percentage of prevalent transplant patients with eGFR <30 ml/min/1.73 m<sup>2</sup> achieving blood pressure of <130/80 mmHg by centre on 31/12/2013

BP <130 and diastolic BP <80 mmHg) was higher (26.8% vs. 21.5%) in those with better renal function (eGFR  $\geq 30$  ml/min/1.73 m<sup>2</sup>).

**Analysis of prevalent patients by CKD stage**

*Introduction*

Approximately 2.4% of prevalent transplant patients returned to dialysis in 2013, a similar percentage to that seen over the last few years. Amongst patients with native chronic kidney disease, late presentation is associated with

poor outcomes, largely attributable to lack of specialist management of anaemia, acidosis, hyperphosphataemia and to inadequate advance preparation for dialysis. Transplant recipients on the other hand, are almost always followed up regularly in specialist transplant or renal clinics and it would be reasonable to expect patients with failing grafts to receive appropriate care and therefore have many of their modifiable risk factors addressed before complete graft failure and return to dialysis.

*Methods*

The transplant cohort consisted of prevalent transplant recipients as on 31st December 2013 (N = 26,896) and were classified

**Table 3.12.** Analysis by CKD stage for prevalent transplant patients compared with prevalent dialysis patients on 31/12/2013

|  | Stage 1–2T<br>(≥60) | Stage 3T<br>(30–59) | Stage 4T<br>(15–29) | Stage 5T<br>(<15) | Stage 5D     |
|--|---------------------|---------------------|---------------------|-------------------|--------------|
| Number of patients                                 | 9,536               | 13,757              | 3,154               | 449               | 21,278       |
| % of patients                                      | 35.5                | 51.2                | 11.7                | 1.7               |              |
| <b>eGFR ml/min/1.73 m<sup>2</sup> <sup>a</sup></b> |                     |                     |                     |                   |              |
| mean ± SD  | 76.9 ± 15.0         | 45.7 ± 8.3          | 23.9 ± 4.1          | 11.9 ± 2.5        |              |
| median   | 72.9                | 45.9                | 24.4                | 12.4              |              |
| <b>Systolic BP mmHg</b>                            |                     |                     |                     |                   |              |
| mean ± SD  | 134.2 ± 16.8        | 135.7 ± 17.4        | 139.9 ± 18.9        | 145.2 ± 21.5      | 132.1 ± 25.1 |
| % ≥ 130  | 59.6                | 63.4                | 70.3                | 77.0              | 51.4         |
| <b>Diastolic BP mmHg</b>                           |                     |                     |                     |                   |              |
| mean ± SD  | 78.4 ± 10.0         | 78.3 ± 10.4         | 78.8 ± 11.5         | 82.1 ± 13.1       | 68.4 ± 14.9  |
| % ≥ 80   | 48.6                | 47.7                | 48.4                | 60.3              | 21.6         |
| <b>Cholesterol mmol/L</b>                          |                     |                     |                     |                   |              |
| mean ± SD  | 4.4 ± 1.0           | 4.5 ± 1.1           | 4.6 ± 1.2           | 4.6 ± 1.2         | 4.0 ± 1.1    |
| % ≥ 4  | 67.7                | 70.4                | 71.2                | 68.5              | 45.1         |
| <b>Haemoglobin g/L</b>                             |                     |                     |                     |                   |              |
| mean ± SD  | 136.4 ± 16.1        | 127.8 ± 16.3        | 115.7 ± 15.2        | 106.0 ± 15.1      | 111.8 ± 13.6 |
| % < 100.0  | 1.5                 | 3.2                 | 13.6                | 32.4              | 16.6         |
| <b>Phosphate mmol/L<sup>b</sup></b>                |                     |                     |                     |                   |              |
| mean ± SD  | 0.9 ± 0.2           | 1.0 ± 0.2           | 1.1 ± 0.3           | 1.5 ± 0.4         | 1.6 ± 0.4    |
| % > 1.7  | 0.1                 | 0.3                 | 2.6                 | 28.4              | 34.3         |
| <b>Corrected calcium mmol/L</b>                    |                     |                     |                     |                   |              |
| mean ± SD  | 2.4 ± 0.1           | 2.4 ± 0.2           | 2.4 ± 0.2           | 2.4 ± 0.2         | 2.4 ± 0.2    |
| % > 2.5  | 28.5                | 28.7                | 22.2                | 16.8              | 17.7         |
| % < 2.2  | 4.2                 | 5.2                 | 9.1                 | 17.8              | 15.7         |
| <b>PTH pmol/L</b>                                  |                     |                     |                     |                   |              |
| median   | 8.5                 | 9.5                 | 15.9                | 28.4              | 31.1         |
| % > 72   | 0.3                 | 0.7                 | 4.0                 | 13.7              | 17.5         |

<sup>a</sup>Prevalent transplant patients with no ethnicity data were classed as White

<sup>b</sup>Only PD patients included in stage 5D, *n* = 2,330

according to the KDIGO staging criteria with the suffix of ‘T’ to represent their transplant status. Patients with missing ethnicity information were classified as White for the purpose of calculating eGFR. Prevalent dialysis patients, except those who commenced dialysis in 2013, comprised the comparison dialysis cohort (*N* = 21,278) including 2,330 peritoneal dialysis patients. Only patients on peritoneal dialysis were considered when examining differences in serum phosphate between transplant recipients and dialysis patients. For both the transplant and dialysis cohorts, the analysis used the most recent available value from the last two quarters of the 2013 laboratory data. Scottish centres were excluded from blood pressure, calcium, cholesterol and PTH analyses as corresponding data were not provided.

### Results and conclusions

Table 3.12 shows that 13.4% of the prevalent transplant population (3,603 patients), had moderate to advanced renal impairment of eGFR <30 ml/min/

1.73 m<sup>2</sup>. The table also demonstrates that patients with failing grafts achieved UK Renal Association standards for some key biochemical and clinical outcome variables less often than dialysis patients. This substantial group of patients represents a considerable challenge, as resources need to be channelled to improve key outcome variables and achieve a safe and timely modality switch to another form of renal replacement therapy.

### eGFR slope analysis

#### Introduction

The gradient of deterioration in eGFR (slope) may predict patients likely to have early graft failure. The



**Table 3.13.** Differences in median eGFR slope between subgroups of prevalent transplant patients

| Patient characteristic                   |                 | N             | Median slope | Lower quartile | Upper quartile | p-value |
|--|-----------------|---------------|--------------|----------------|----------------|---------|
| Age at transplant                        | <40             | 4,438         | -1.08        | -4.15          | 11.1           | <0.0001 |
|  | 40-55           | 5,556         | -0.36        | -2.74          | 16.0           |         |
|  | >55             | 4,499         | -0.39        | -2.74          | 15.8           |         |
| Ethnicity                                | Asian           | 1,313         | -0.93        | -3.88          | 16.6           | <0.0001 |
|  | Black           | 856           | -1.29        | -4.27          | 13.2           |         |
|  | Other           | 295           | -1.03        | -4.57          | 13.3           |         |
|  | White           | 11,204        | -0.52        | -2.95          | 13.8           |         |
| Gender                                   | Male            | 8,860         | -0.36        | -2.78          | 15.7           | <0.0001 |
|  | Female          | 5,633         | -0.91        | -3.80          | 12.5           |         |
| Diabetes                                 | Non-diabetic    | 12,210        | -0.47        | -2.95          | 15.1           | <0.0001 |
|  | Diabetic        | 2,008         | -1.23        | -4.01          | 10.6           |         |
| Donor                                    | Cadaveric       | 9,464         | -0.58        | -3.14          | 14.3           | 0.8     |
|  | Live            | 5,029         | -0.57        | -3.17          | 14.8           |         |
| Year of transplant                       | 2002            | 787           | -0.61        | -2.32          | 05.8           | <0.001  |
|  | 2003            | 972           | -0.55        | -2.34          | 08.6           |         |
|  | 2004            | 1,138         | -0.32        | -2.11          | 10.6           |         |
|  | 2005            | 1,134         | -0.17        | -2.07          | 13.0           |         |
|  | 2006            | 1,434         | -0.59        | -2.66          | 11.2           |         |
|  | 2007            | 1,572         | -0.66        | -2.71          | 11.3           |         |
|  | 2008            | 1,804         | -0.58        | -2.96          | 14.3           |         |
|  | 2009            | 1,876         | -0.93        | -3.78          | 13.6           |         |
|  | 2010            | 1,943         | -0.80        | -4.53          | 24.9           |         |
|  | 2011            | 1,833         | -0.40        | -5.93          | 44.2           |         |
| Status of transplant at end of follow-up | Died            | 1,006         | -0.88        | -3.98          | 19.4           | <0.001  |
|  | Failed          | 1,029         | -6.23        | -11.96         | -2.90          |         |
|  | Re-transplanted | 54            | -3.83        | -6.80          | -1.47          |         |
|  | Functioning     | 12,404        | -0.29        | -2.51          | 16.0           |         |
| <b>All</b>                               |                 | <b>14,493</b> | <b>-0.58</b> | <b>-3.15</b>   | <b>1.45</b>    |         |

eGFR slope and its relationship to specific patient characteristics are presented here.

### Methods

All UK patients aged  $\geq 18$  years receiving a renal transplant between 1st January 2002 and 31st December 2011, were considered for inclusion. A minimum duration of 18 months graft function was required and three or more creatinine measurements from the second year of graft function onwards were used to plot eGFR slope. If a transplant failed but there were at least three creatinine measurements between one year post-transplant and graft failure, the patient was included but no creatinine measurements after the quarter preceding the recorded date of transplant failure were analysed.

Slopes were calculated using linear regression, assuming linearity, and the effect of age, ethnicity, gender, diabetes, donor type, year of transplant and current transplant status were analysed. *P* values were calculated using the Kruskal-Wallis test. eGFR was

calculated using the CKD-EPI equation and results expressed as ml/min/1.73 m<sup>2</sup>/year. The CKD-EPI equation was used in preference to the MDRD formula as it is thought to have a greater degree of accuracy at higher levels of eGFR [11].

### Results and conclusions

The study cohort consisted of 14,493 patients. The median GFR slope was  $-0.58$  ml/min/1.73 m<sup>2</sup>/year (table 3.13). The gradient was steeper for Black recipients ( $-1.3$  ml/min/1.73 m<sup>2</sup>/year), in keeping with previously published data suggesting poorer outcomes for this group [12,13]. There was no statistically significant difference in eGFR slope in recipients of deceased donor kidneys ( $-0.58$  ml/min/1.73 m<sup>2</sup>/year) compared to patients who received organs from live donors ( $-0.57$  ml/min/1.73 m<sup>2</sup>/year). Female patients had a steeper slope ( $-0.91$  ml/min/

1.73 m<sup>2</sup>/year) than males (−0.36 ml/min/1.73 m<sup>2</sup>/year), as did diabetic patients (−1.23 ml/min/1.73 m<sup>2</sup>/year) compared to non-diabetic patients (−0.47 ml/min/1.73 m<sup>2</sup>/year). The slope was steeper in younger recipients, possibly reflecting increased risk of immunological damage. As might be expected, the steepest slope was in patients where the transplant subsequently failed. This analysis has assumed linearity of progression of fall in GFR and further work is underway to characterise the patterns of progression more precisely.

The findings in this study differ slightly from previous UKRR work exploring eGFR changes in transplant recipients [14]. This identified that male donor to female recipient transplantation, younger recipients, diabetes, white ethnicity, and human leukocyte antigen (HLA) mismatch were associated with faster decline in eGFR. These differences may be explained by patients with eGFR >60 ml/min/1.73 m<sup>2</sup> at one year post-transplantation being excluded and the more complex multivariable model used in the previous work. Udayaraj and colleagues [14] also adjusted for factors such as HLA mismatch and donor age, which were not available for the patients studied in this chapter.

## Cause of death in transplant recipients

### Introduction

Differences in causes of death between dialysis and transplant patients may be expected due to selection for transplantation and use of immunosuppression. Chapter 5 includes a more detailed discussion on cause of death in dialysis patients.

### Methods

The cause of death is sent by renal centres as an ERA-EDTA registry code. These have been grouped into the following categories: cardiac disease, cerebrovascular disease, infection, malignancy, treatment withdrawal, other and uncertain.

Some centres have high data returns to the UKRR regarding cause of death, whilst others return no information. Provision of this information is not mandatory. Analysis of prevalent patients included all those aged over 18 years and receiving RRT on 1st January 2013.

### Results and conclusions

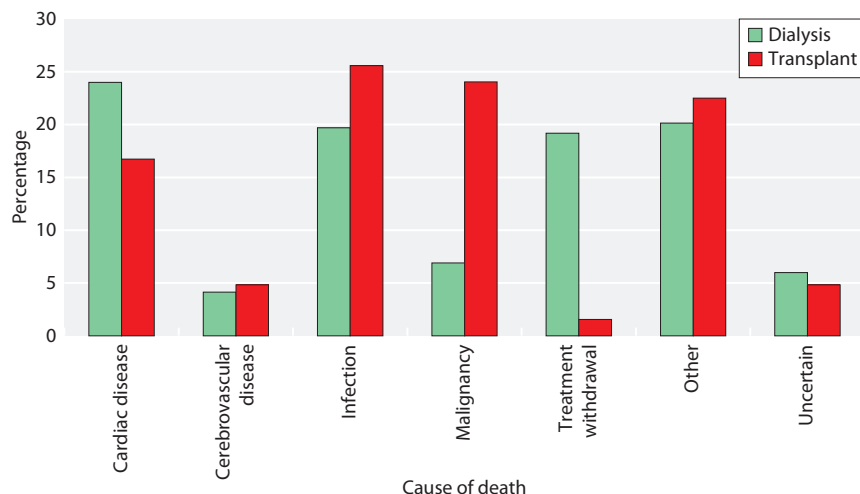
Table 3.14 and figure 3.11 show the differences in the cause of death between prevalent dialysis and transplant patients. Table 3.15 shows the cause of death for prevalent

**Table 3.14.** Cause of death by modality in prevalent RRT patients on 1/1/2013, who died in 2013

| Cause of death          | All modalities |    | Dialysis     |    | Transplant |    |
|-------------------------|----------------|----|--------------|----|------------|----|
|                         | N              | %  | N            | %  | N          | %  |
| Cardiac disease         | 734            | 23 | 647          | 24 | 87         | 17 |
| Cerebrovascular disease | 136            | 4  | 111          | 4  | 25         | 5  |
| Infection               | 664            | 21 | 531          | 20 | 133        | 26 |
| Malignancy              | 311            | 10 | 186          | 7  | 125        | 24 |
| Treatment withdrawal    | 525            | 16 | 517          | 19 | 8          | 2  |
| Other                   | 660            | 21 | 543          | 20 | 117        | 23 |
| Uncertain               | 186            | 6  | 161          | 6  | 25         | 5  |
| <b>Total</b>            | <b>3,216</b>   |    | <b>2,696</b> |    | <b>520</b> |    |
| No cause of death data  | 1,353          | 30 | 1,130        | 30 | 223        | 30 |

**Table 3.15.** Cause of death in prevalent transplant patients on 1/1/2013 by age, who died in 2013

| Cause of death          | All age groups |    | <65 years  |    | ≥65 years  |    |
|-------------------------|----------------|----|------------|----|------------|----|
|                         | N              | %  | N          | %  | N          | %  |
| Cardiac disease         | 87             | 17 | 47         | 18 | 40         | 16 |
| Cerebrovascular disease | 25             | 5  | 11         | 4  | 14         | 5  |
| Infection               | 133            | 26 | 65         | 25 | 68         | 27 |
| Malignancy              | 125            | 24 | 73         | 28 | 52         | 20 |
| Treatment withdrawal    | 8              | 2  | 5          | 2  | 3          | 1  |
| Other                   | 117            | 23 | 54         | 20 | 63         | 25 |
| Uncertain               | 25             | 5  | 9          | 3  | 16         | 6  |
| <b>Total</b>            | <b>520</b>     |    | <b>264</b> |    | <b>256</b> |    |
| No cause of death data  | 223            | 30 | 110        | 29 | 113        | 31 |



**Fig. 3.11.** Cause of death by modality for prevalent patients on 1/1/2013, who died in 2013

transplant patients by age. Death due to cardiovascular disease was less common in transplanted patients than in dialysis patients, perhaps reflecting the cardiovascular screening undertaken during transplant work-up; transplant recipients are a pre-selected lower risk group of patients. The leading causes of death amongst transplant patients were infection (26%), malignancy (24%) and other (23%). There has been a reduction over time in the proportion of deaths in transplant patients attributed to cardiovascular or stroke disease (43% in 2003 compared to 22% in 2013) with an increase in the proportion ascribed to infection or malignancy (30% in 2003 compared to 50%

in 2013). This change has also been reported in other registries, e.g. ANZDATA (<http://www.anzdata.org.au>) and may reflect better management of cardiovascular risk (although table 3.12 shows blood pressure management remained suboptimal). Explanations for the rising death rate secondary to malignancy may include the increasing age of transplant recipients and the increased intensity of immunosuppressive regimens leading to complications of over-immunosuppression.

Conflicts of interest: Dr I MacPhee has received research funding and speaker honoraria from Astellas.

## References

- 1 Ansell D, Tomson CRV: UK Renal Registry 11th Annual Report (December 2008) Chapter 15 The UK Renal Registry, UKRR database, validation and methodology. *Nephron Clin Pract* 2009;111(suppl 1):c277–c285
- 2 Pruthi R, Ramanan R, O'Neill J, Roderick P, Pankhurst L, Udayaraj U: 15th annual report: Chapter 9 centre variation in access to renal transplantation in the UK (2006–2008). *Nephron Clin Pract*. 2013; 123(suppl 1):183–93. doi: 10.1159/000353328
- 3 Pruthi R, Casula A, MacPhee I: UK Renal Registry 16th annual report: Chapter 3 demographic and biochemistry profile of kidney transplant recipients in the UK in 2012: national and centre-specific analyses. *Nephron Clin Pract*. 2013;125(1–4):55–80. doi: 10.1159/000360022
- 4 Bosma RJ, Doorenbos CRC, Stegeman CA, Homan van der Heide JJ, Navis G: Predictive Performance of Renal Function Equations in Renal Transplant Recipients: An analysis of Patient Factors in Bias. *Am J Transplant* 2005;5:2183–2203
- 5 Froissart M, Rossert J, Jacquot C, Paillard M, Houillier P: Predictive Performance of the Modification of Diet in Renal Disease and Cockcroft-Gault Equations for Estimating Renal Function. *J Am Soc Nephrol*. 2005;16:763–773
- 6 Hariharan, S, McBride MA, Cherikh WS, Tolleris CB, Bresnahan BA, Johnson CP: Post-transplant renal function in the first year predicts long-term kidney transplant survival. *Kidney Int* 2002;62:1:311–318
- 7 UK Renal Association Clinical Practice Guidelines Committee: Anaemia of CKD, 5th Edition. 2010. <http://www.renal.org/clinical/GuidelinesSection/AnaemiaInCKD.aspx>
- 8 UK Renal Association Clinical Practice Guidelines Committee: Guideline 3.7: Target haemoglobin. 2007 RA Guidelines – Complications of CKD, 4th Edition. 2007. <http://www.renal.org/Clinical/GuidelinesSection/ComplicationsofCKD.aspx>
- 9 UK Renal Association Clinical Practice Guidelines Committee: Guideline: Post-operative Care of the Kidney Transplant Recipient, 5th Edition. 2011. <http://www.renal.org/Clinical/GuidelinesSection/Post-operative-Care-Kidney-Transplant-Recipient.aspx>
- 10 UK Renal Association Clinical Practice Guidelines Committee: Guideline 2.1: Treatment of patients with CKD. 2007 RA Guidelines – CKD, 4th Edition. 2007. <http://www.renal.org/Clinical/GuidelinesSection/CKD.aspx>
- 11 White CA, Akbari A, Doucette S, Fergusson D, Knoll GA: Estimating Glomerular Filtration Rate in Kidney Transplantation: Is the New

- Chronic Kidney Disease Epidemiology Collaboration Equation Any Better? *Clin Chem* 2010;56:3:474–477
- 12 Ng FL, Holt DW, Chang RWS, MacPhee IAM: Black renal transplant recipients have poorer long-term graft survival than CYP3A5 expressers from other ethnic groups. *Nephrol Dial Transplant* 2010;25:628–634
- 13 Isaacs RB, Nock SL, Spencer CE, Connors AF Jr, Wang XQ, Sawyer R, Lobo PI: Racial disparities in renal transplant outcomes. *Am J Kidney Dis* 1999;34:4:706–712
- 14 Udayaraj U, Casula A, Ansell D, Dudley CRK, Ramanan R: Chronic Kidney Disease in Transplant Recipients – Is It Different From Chronic Native Kidney Disease? *Transplantation* 2010;90:7:765–770

**Appendix 1: Reporting status of audit measures****Table 3.16.** Showing the reporting status of the recommended Renal Association Audit Measures for the Post-operative Care of Kidney Transplant Recipients in the 17th Annual Report

| RA audit measure  | Included in UKRR annual report? | Reason for non-inclusion                   |
|---|---------------------------------|--|
| 1. Proportion of blood results available for review, and reviewed, within 24 hours  | No                              | UKRR does not currently collect these data |
| 2. Proportion of units with a written follow-up schedule available to all staff and patients  | No                              | UKRR does not currently collect these data |
| 3. Percentage of patients accessing their results through Renal Patient View  | No                              | Requires linkage with RPV                  |
| 4. Percentage of total patients assessed in an annual review clinic   | No                              | UKRR does not currently collect these data |
| 5. Percentage of total patients receiving induction with ILRAs and TDAs   | No                              | Poor data completeness                     |
| 6. Percentage of de novo KTRs receiving tacrolimus  | No                              | Poor data completeness                     |
| 7. Percentage of de novo KTRs receiving MPA based immunosuppression   | No                              | Poor data completeness                     |
| 8. Percentage of de novo KTRs receiving corticosteroid maintenance therapy  | No                              | Poor data completeness                     |
| 9. Use of generic agents  | No                              | UKRR does not currently collect these data |
| 10. Severity of biopsy proven acute rejection (BPAR) recorded by BANFF criteria   | No                              | UKRR does not currently collect these data |
| 11. Percentage of KTRs with BPAR in first 3 months and first 12 months  | No                              | UKRR does not currently collect these data |
| 12. Percentage of KTRs requiring TDAs to treat rejection in first year  | No                              | UKRR does not currently collect these data |
| 13. Complication rates after renal transplant biopsy  | No                              | UKRR does not currently collect these data |
| 14. Proportion of patients receiving a target blood pressure of 130/80 mmHg or 125/75 mmHg in the presence of proteinuria (PCR >100 or ACR >70) | No                              | Poor data completeness                     |
| 15. Proportion of patients receiving an ACE inhibitor or angiotensin receptor blocker   | No                              | Poor data completeness                     |
| 16. Proportion of patients with proteinuria assessed by dipstick and, if present, quantified at each clinic visit                               | No                              | UKRR does not currently collect these data |
| 17. Proportion of renal transplant recipients with an annual fasting lipid profile  | No                              | UKRR does not currently collect these data |
| 18. Proportion of KTR taking statins (including the type of statin) for primary and secondary prevention of premature cardiovascular disease    | No                              | UKRR does not currently collect these data |
| 19. Proportion of patients on other lipid lowering agents   | No                              | Poor data completeness                     |
| 20. Proportion of patients achieving dyslipidaemia targets  | Yes                             |  |
| 21. Incidence of new onset diabetes after transplantation (NODAT) at three months and at annual intervals thereafter                            | No                              | UKRR does not currently collect these data |
| 22. Proportion of patients who require insulin, and in whom remedial action is undertaken – minimisation of steroids and switching of CNIs      | No                              | UKRR does not currently collect these data |
| 23. Proportion of patients with ischaemic heart disease   | No                              | Poor data completeness                     |
| 24. Proportion of patients suffering myocardial infarction  | No                              | Poor data completeness                     |
| 25. Proportion of patients undergoing primary revascularisation   | No                              | Poor data completeness                     |

**Table 3.16.** Continued

| RA audit measure   | Included in UKRR annual report? | Reason for non-inclusion                   |
|--|---------------------------------|--|
| 26. Proportion of patients receiving secondary prevention with a statin, anti-platelet agents and RAS blockers | No                              | UKRR does not currently collect these data |
| 27. Proportion of patients who are obese   | No                              | Poor data completeness                     |
| 28. Proportion of patients having screening procedures for neoplasia at the annual review clinic               | No                              | UKRR does not currently collect these data |
| 29. Incidence of CMV disease   | No                              | Poor data completeness                     |
| 30. Rate of EBV infection and PTLD   | No                              | UKRR does not currently collect these data |
| 31. Completeness of records for EBV donor and recipient serology   | No                              | UKRR does not currently collect these data |
| 32. Rates of primary VZV and shingles infection  | No                              | UKRR does not currently collect these data |
| 33. Completeness of records for VZV recipient serology   | No                              | UKRR does not currently collect these data |
| 34. Rates and outcomes of HSV infection  | No                              | UKRR does not currently collect these data |
| 35. Rates of BK viral infection in screening tests   | No                              | UKRR does not currently collect these data |
| 36. Rates and outcomes of BK nephropathy   | No                              | UKRR does not currently collect these data |
| 37. Frequency of bisphosphonate use  | No                              | UKRR does not currently collect these data |
| 38. Incidence of fractures   | No                              | UKRR does not currently collect these data |
| 39. Incidence of hyperparathyroidism   | No                              | Poor data completeness                     |
| 40. Incidence of parathyroidectomy   | No                              | UKRR does not currently collect these data |
| 41. Use of cinacalcet  | No                              | Poor data completeness                     |
| 42. Frequency of hyperuricaemia and gout   | No                              | UKRR does not currently collect these data |
| 43. Prevalence of anaemia  | Yes                             |  |
| 44. Prevalence of polycythaemia  | No                              | Poor data completeness                     |
| 45. Pregnancy rates and outcomes   | No                              | UKRR does not currently collect these data |
| 46. Prevalence of sexual dysfunction   | No                              | UKRR does not currently collect these data |